



Predstavitev sprememb v zračnem prostoru FIR Ljubljana na področju letališča Cerklje ob Krki – LJCE

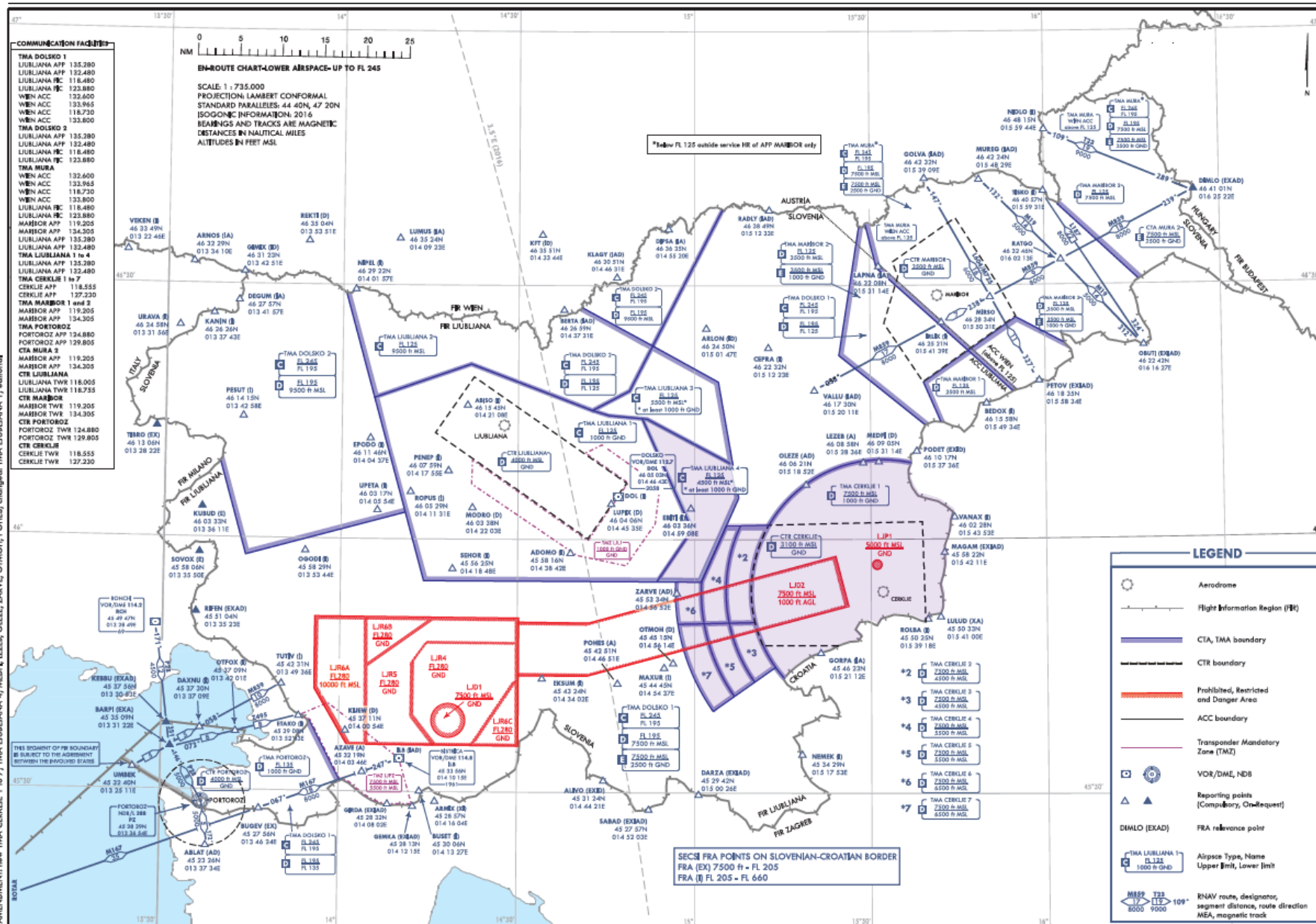
Potek predstavitve

1. Uvod
2. Pregled nove ureditve zračnega prostora
3. Možna vprašanja in odgovori

ZRAČNI PROSTOR

Za zaščito instrumentnih procedur je MZI odobril implementacijo novih volumnov zračnega prostora na področju letališča Cerklje – LJCE :

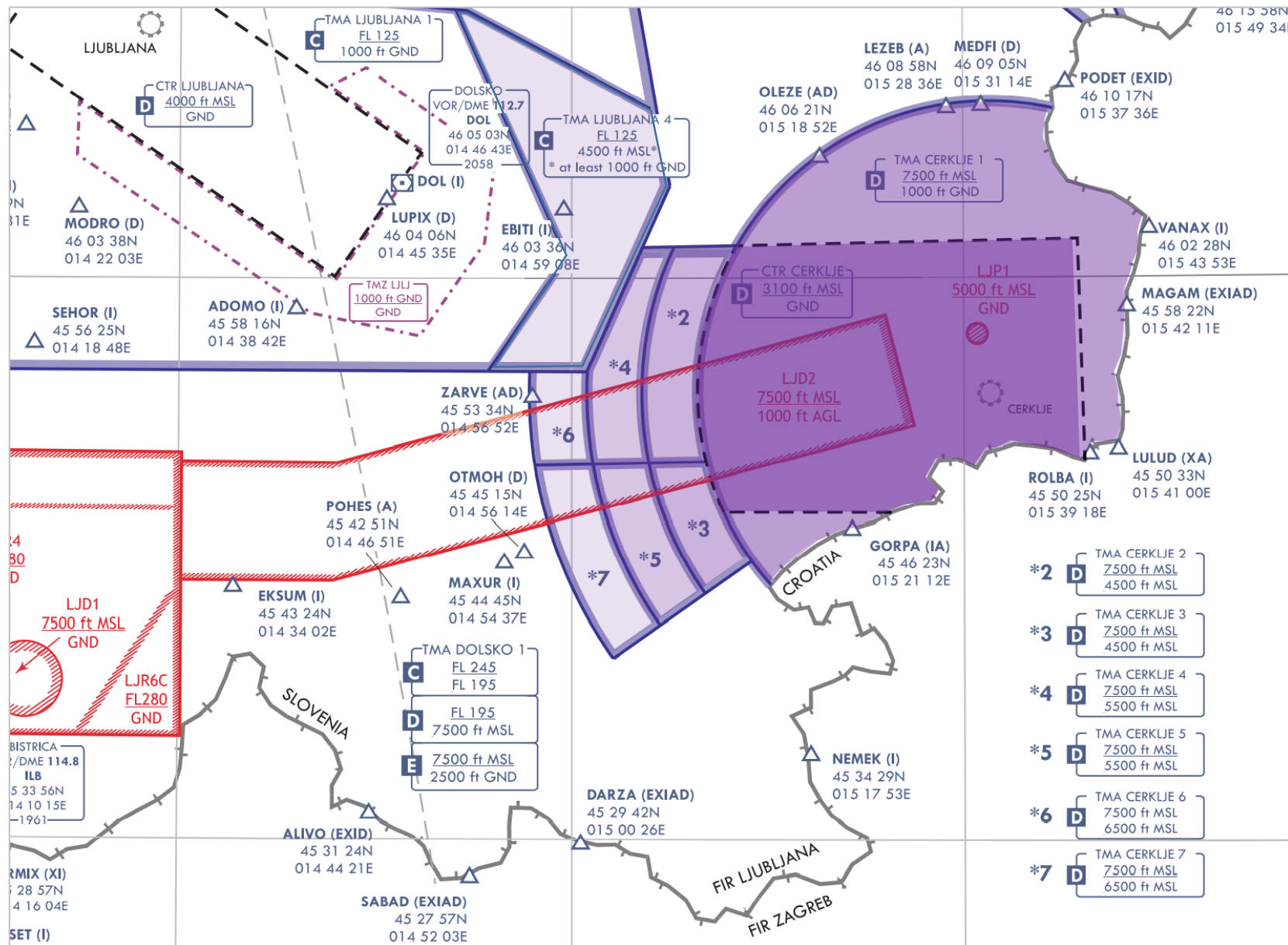
- Sprememba oblike CTR Cerklje
- Implementacija TMA Cerklje 1 – 7
- Preoblikovanje TMA Ljubljana 1
- Umestitev TMA Ljubljana 4



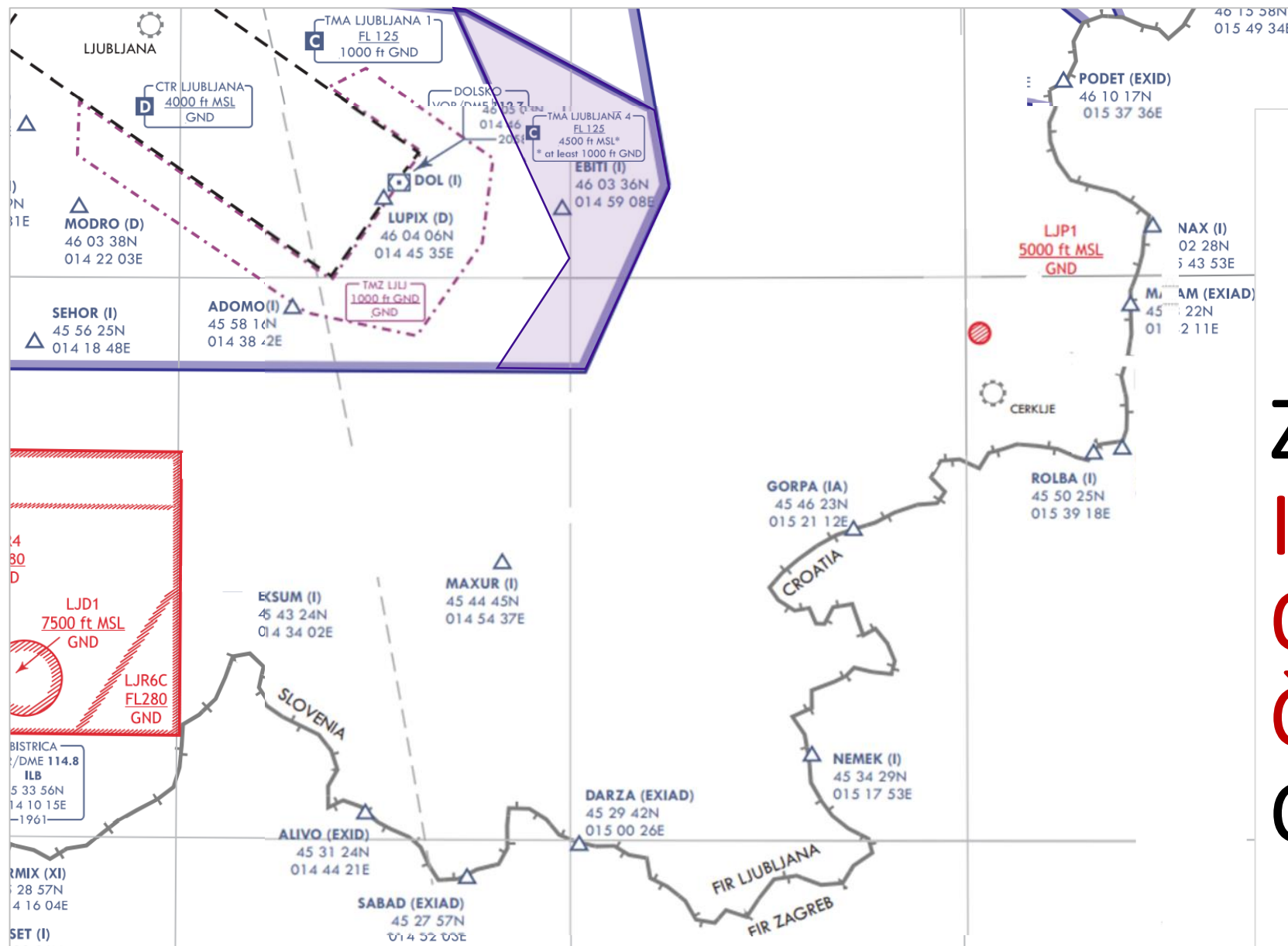
KARTA SPODNJEGA ZRAČNEGA PROSTORA POD FL 245

ENR 6.1-1

EN-ROUTE CHART LOWER AIRSPACE



ZRAČNI PROSTOR ZNOTRAJ OBRATOVALNEGA ČASA TWR/APP CERKLJE



ZRAČNI PROSTOR IZVEN OBRATOVALNEGA ČASA TWR/APP CERKLJE

Podatki o odprtosti LJCE

Vir: NOTAM serije B

B011x/21

Q) LJLA/QFAAH/IV/NBO/A/000/999/4554N01532E005

A) LJCEB) 07.0x.2021 13:00C) 14.0x.2021 13:00

E) OPERATIONAL HOURS OF AD CERKLJE OB KRKI ARE:

MON 0630-1300

TUE 0630-1300

WED 0630-1300

THU 1300 – 2100 (0630-1300)

FRI 0630-1300

Publication time: 07.0x.2021 7:20:04

Link: C0x65/21



SLOVENIA
CONTROL

HOME

PUBLIC NOTIFICATIONS ▾

TRAFFIC STATISTICS

ABOUT THE COMPANY ▾

SAFETY

CONTACT



eARO ENTRY →



KONTROLA
ZRAČNEGA
PROMETA
SLOVENIJE

Safety, quality and efficiency

For all users of Slovenian
airspace

MEET US →



LAST NEWS • 27. 07. 2020

The European Commission co-financed the establishment and implementation of the “Slovenia Wide Area Multilateration System - SLOWAM” by Slovenia Control

Ljubljana, Slovenia – The European Commission supported a 2-year project of the “Slovenia Wide Area Multilateration System” (SLOWAM), implemented by the company Slovenia Control (Kontrola zračnega prometa Slovenije, d.o.o. or KZPS, d.o.o.).

READ MORE →

Electronic AIP

AIRAC AMDT 107/25 MAR 2021 →

AIP SUP 001/2021 →

AIP SUP 002/2021 →

NOTAM messages

NOTAM Summary A →

NOTAM Summary B →

NOTAM Summary C →

Dostop do podatkov :
<https://www.sloveniacontrol.si/en>
AIP Slovenia
NOTAM
VFR Karta


LJCE AD 2.3 OPERATIONAL HOURS

1	AD Administration	Refer to NOTAM series B and C
2	Customs and immigration	O/R ³⁾
3	Health and sanitation	During service HR of AD
4	AIS Briefing Office	H24 ⁴⁾
5	ATS Reporting Office (ARO)	H24
6	MET Briefing Office	As AD Administration
7	ATS	As AD Administration
8	Fuelling	As AD Administration
9	Handling	As AD Administration
10	Security	H24
11	De-icing	Nil
12	Remarks	<p>1) All civil registered aircraft must obtain written approval for landing at aerodrome LJCE from AD Administration (see LJCE AD 2.20.5). Requests (PPR Form) must be submitted at least 72 hours prior to landing to email address: airport.ljce@mors.si and/or dispatch.ljce@mors.si.</p> <p>2) All foreign State (Military, Police, Customs) and Diplomatic flights must obtain written approval for landing at aerodrome LJCE from AD Administration (see LJCE AD 2.20.5). Request (PPR Form) must be submitted at least 72 hours prior to landing to email address: airport.ljce@mors.si and/or dispatch.ljce@mors.si. Obtained approval for landing at LJCE is valid only with written approval (Diplomatic Clearance), issued by Ministry of Foreign affairs.</p> <p>3) Border crossing and/or Customs formalities at LJCE are possible only on request (see LJCE AD 2.20.5) for foreign State (Military, Police, Customs) and Diplomatic flights only.</p> <p>4) Centralised ARO (ARO SLOVENIA) is responsible for AIS Briefing (Preflight Information Bulletin); Phone: +386 4 2040 420; Fax:+386 4 2023 851 URL: http://fpl-sloveniacontrol.ead-it.com</p> <p>Touch and go operations are permitted only in VFR conditions during AD operational hours.</p>



AD 2 LJCE-10
05 DEC 2019

AIP SLOVENIA



PPR Form
Slovenian Armed Forces / 15th WING
Airport Cerklje ob Krki (LJCE)
TELEPHONE: +386 7 495 4041
FAX: +386 7 495 4134
e-mail: airport.ljce@mors.si, dispatch.ljce@mors.si
LJCE details: AP AD 2 LJCE, PPR Form: LJCE AD 220.5
Please fill out following PPR completely and e-mail it.

NATION	CALL SIGN	TYPE OF AIRCRAFT	AIRCRAFT REG.	PURPOSE OF FLIGHT

ARRIVAL at LJCE

Date (dd-mm-yy)	ETA (UTC)	From (ICAO)	
VIPs	PAX		Freight in Kgs
Civil	Mil	Civil	Mil

DEPARTURE from LJCE

Date (dd-mm-yy)	ETD (UTC)	To (ICAO)	
VIPs	PAX		Freight in Kgs
Civil	Mil	Civil	Mil

Remarks:

Services request (tick mark your choice)

Approach Type (VFR or IFR)	Ground Power Unit	Armament	Storage
Waste removal	Water		
Accommodation	Number of Persons	Breakfast, lunch, dinner	
Fuel	Type	Quantity (litres or lbs)	
Special request			

Coordinates of requesting operator / authority

Operator:	Commercial Tel:
FAX (unsecure only):	e-mail:
Name:	Rank:

Response - Reserved for AD Administration at LJCE

PPR GRANTED:	YES	PPR 'N'	NO	Remarks / Reasons:

	Duty Crew

When completed please send this PPR form with PAX/CREW list to Airport Cerklje ob Krki (LJCE) on: airport.ljce@mors.si and dispatch.ljce@mors.si

AIRAC AMDT 096/2019 © Slovenia Control, Ltd.

LJCE AD 2.18 AIR TRAFFIC SERVICES COMMUNICATION FACILITIES

Service designation	Call sign	Channel (MHz)	Hours of operation	Remarks
1	2	3	4	5
TWR	CERKLJE TOWER	118.555 127.230	As AD Administration	Primary FREQ (118.555) VDF available
APP	CERKLJE APPROACH	118.555 127.230	As AD Administration	Primary FREQ (118.555) VDF available
HANDLING	CERKLJE DISPATCH	131.480	As AD Administration	Handling requests and refuelling
MILOPS	CERKLJE MILITARY	120.630	Refer to NOTAM series B and C	<ul style="list-style-type: none"> • Used by Slovenian Military, outside operational hours of CERKLJE TWR • Check possible NOTAM referring to the status of CERKLJE CTR
A/G	CERKLJE AERODROME	123.505	See Remarks	Outside working hours of CERKLJE TWR and NO MILOPS activated by NOTAM.
		121.500	As AD Administration	Emergency FREQ.

LJCE AD 2.22 FLIGHT PROCEDURES

1 PROCEDURES FOR VFR FLIGHTS WITHIN CTR CERKLJE

1.1 The approach, holding and departure procedures are based on the provisions contained in the following ICAO Documents:

- *ICAO Annex 6 - Operation of Aircraft*
- *ICAO Annex 14 - Aerodromes*
- *Doc 4444 - RAC/501 - Rules of the Air and Air Traffic Services (PANS-RAC)*
- *Doc 8168 - OPS/611 - Aircraft Operations (PANS-OPS), Volume I and II*

1.2 Airspace inside CERKLJE TMA 1-7 and CERKLJE CTR is defined and designated as controlled airspace class D as recommended by ICAO.

1.3 Outside operational hours of CERKLJE APP/TWR or otherwise declared by NOTAM the airspace classification of CERKLJE TMA 1-7 and CERKLJE CTR is the same as airspace classification of DOLSKO 1 TMA.

1.4 Within the CERKLJE TMA 1-7 and CERKLJE CTR all traffic shall have established two-way air-ground communication with CERKLJE TWR on channel 118.555, backup channel is 127.230

1.5 Entry to or exit from CERKLJE TMA 1-7 and CERKLJE CTR shall be executed at entry-exit points at the recommended altitude as presented on the chart LJCE AD 2.24.13-1 - Visual Approach Chart, except for SVN Military helicopters and aircraft.

LJCE AD 2.22 FLIGHT PROCEDURES



1 PROCEDURES FOR VFR FLIGHTS WITHIN CTR CERKLJE

1.6 VFR Flights shall enter CERKLJE TMA 1-7 and CERKLJE CTR as follows:

Reporting point		Definition
From NORTH	CN1	461010N 0152335E - Kolobje-church in the centre of a village
	CN2	455830N 0152856E - Krsko - hydro power plant
From NORTHWEST	CNW	460241N 0151326E - Vrhovo - hydro power plant
From WEST	TREBNJE	455356N 0150136E - Dul-highway rest station
From WEST	CW1	455037N 0151118E - Trska gora-church
From SOUTHWEST	CS1	454348N 0151205E - Quarry near Podgrad
	CS2	455018N 0152003E - Šentjernej-hippodrome racetrack

1.7 The pilots approaching CERKLJE TMA 1-7 and CERKLJE CTR are required to report 5 minutes before entering TMA/CTR, to obtain clearance. Clearance will be given in accordance with direction of approach and traffic situation via prescribed points.

1.8 VFR Flight shall not enter or exit CERKLJE CTR along Slovenian/Croatian border.

LJCE AD 2.22 FLIGHT PROCEDURES



1 PROCEDURES FOR VFR FLIGHTS WITHIN CTR CERKLJE

- 1.9 Outside operational hours of CERKLJE APP/TWR Slovenian Military is responsible for Military air traffic. NOTAM shall be published to restrict flying in CERKLJE CTR for all civil aircraft.
- 1.10 Outside operational hours of CERKLJE TWR and NO MILITARY OPS ACTIVATED, Local Flying Club may use runways and operating on channel 123.505
- 1.11 Slovenian Military Flights:
S1, S2, E1 and E2 positions are for Slovenian Military Helicopters training purposes ONLY. (see Aerodrome Chart)
- APRON K is for State aircraft ONLY.

VISUAL
APPROACH
CHART

AD ELEV 503 ft

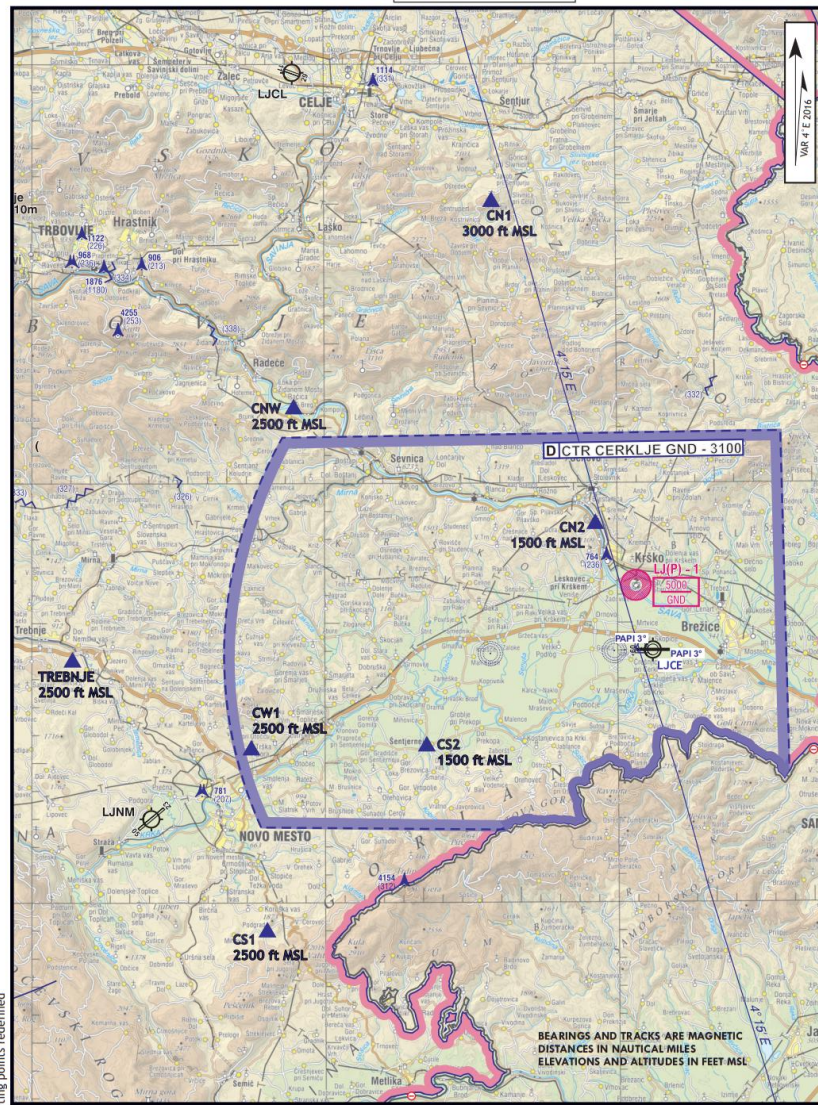
CERKLJE TOWER 118.555
CERKLJE TOWER 127.230
CERKLJE APPROACH 118.555
CERKLJE APPROACH 127.230

Cerklje ob Krki / CERKLJE



KONTROLA
ZRAČNEGA
PROMETA
SLOVENIJE

VFR TRAFIC & VISUAL APPROACH CHART - LJCE

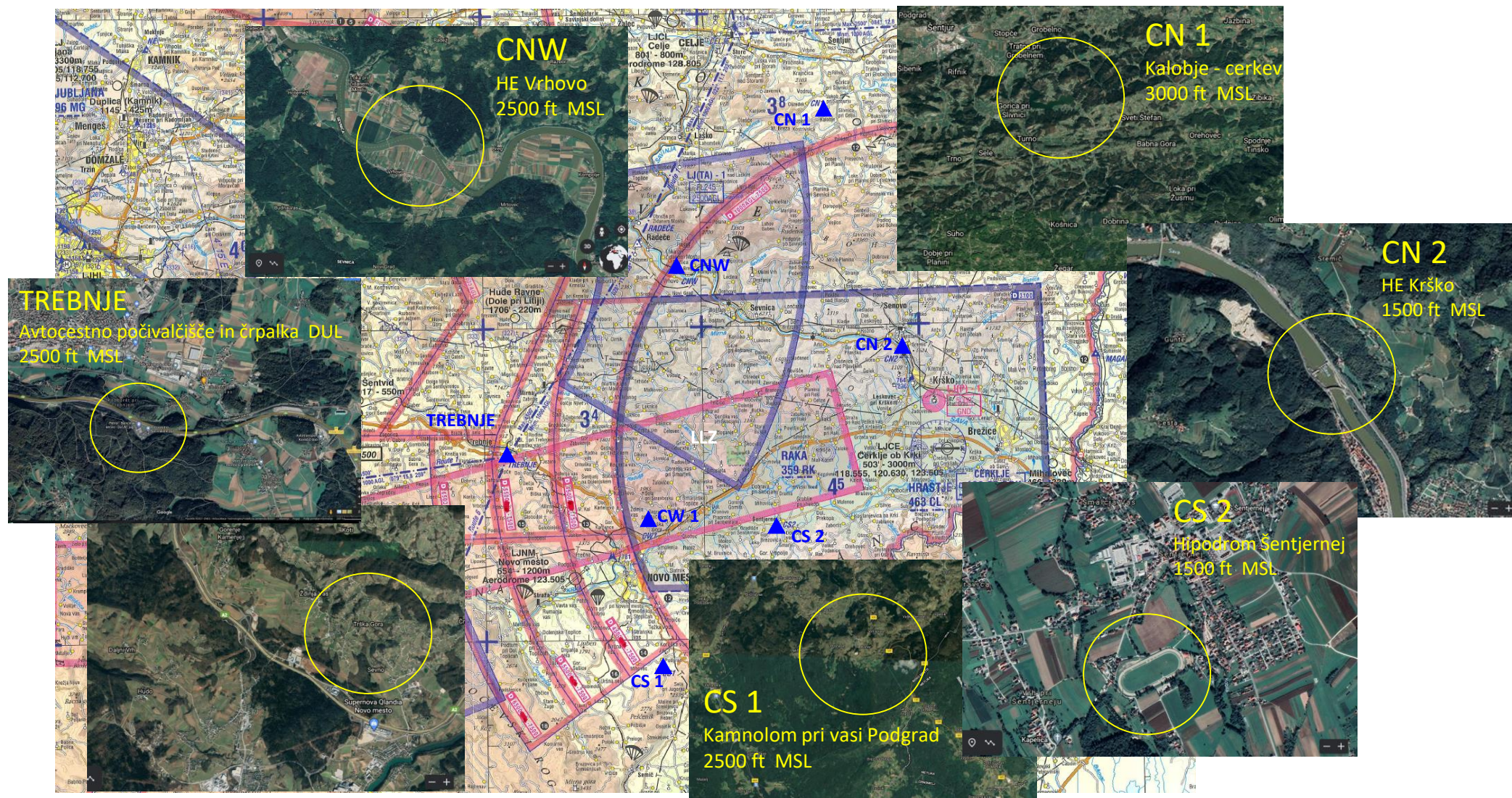


AMENDMENT: Reporting points redefined

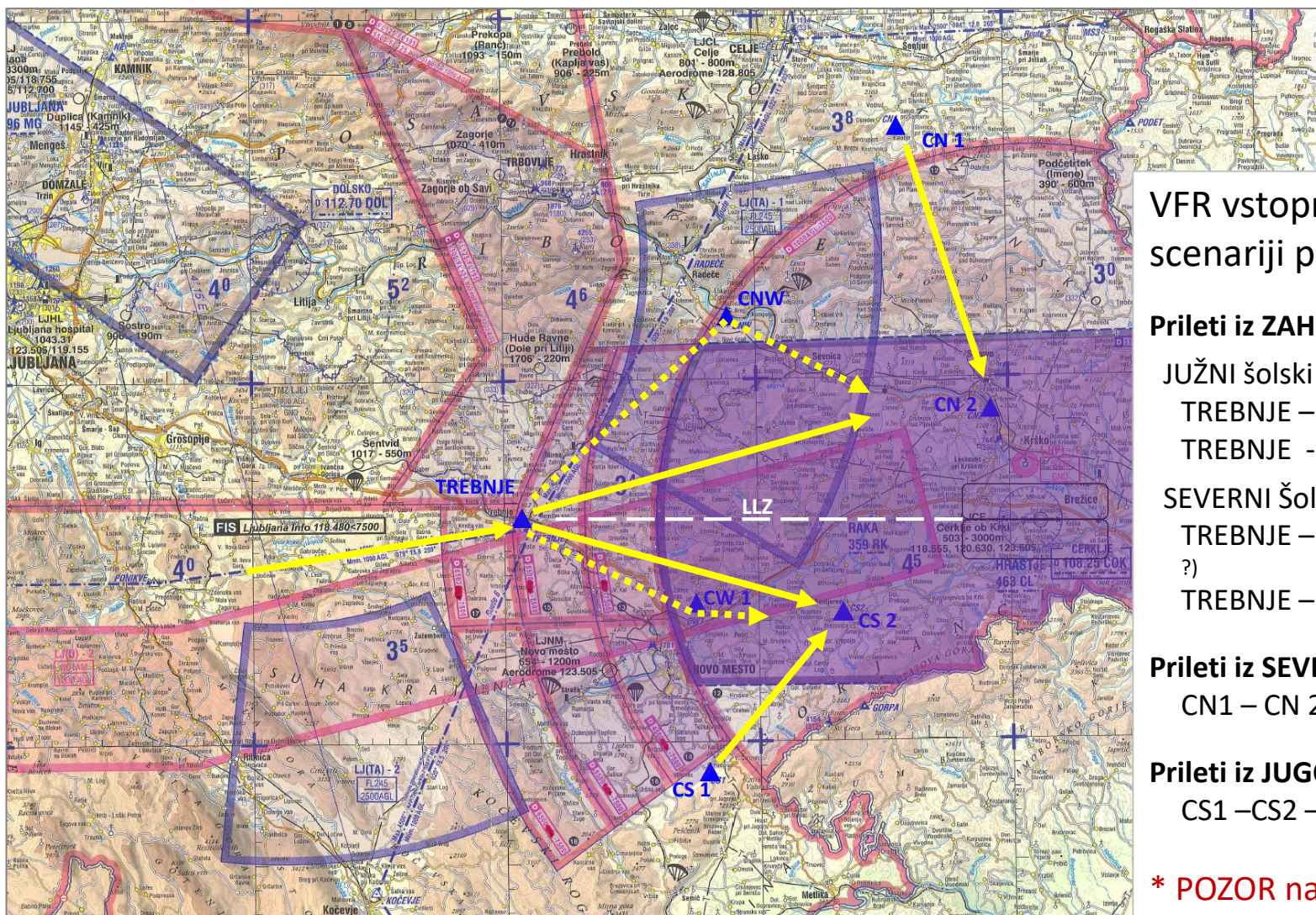
Reporting point	Description	Reporting point	Description
CN1	Kalodje - church in the center of a village	CW1	Trška gora - church
CN2	hydro power plant	CS1	Quarry near Podgrad
CW2	Whove - hydro power plant	CS2	Šentjernej - hippodrome
TREBNJE	Dul - highway rest station		

BEARINGS AND TRACKS ARE MAGNETIC
DISTANCES IN NAUTICAL MILES
ELEVATIONS AND ALTITUDES IN FEET MSL

VFR VSTOPNO IZSTOPNE TOČKE ZA TMA / CTR CERKLJE



VFR VSTOPNO IZSTOPNE TOČKE ZA TMA / CTR CERKLJE



VFR vstopno izstopne točke za LJCE in možni scenariji priletov:

Prileti iz ZAHODA in vključevanja v :

JUŽNI šolski krog

TREBNJE – CW1 – CS2 – down wind RWY 09 /27 (promet po ILS-u ?)

TREBNJE - CS 2 – down wind RWY 09/27

SEVERNI Šolski krog (aktivna LJ-D2):

TREBNJE – CNW – CN 2* – down wind RWY 27/09 (promet po ILS-u ?)

TREBNJE – CN2* – down wind RWY 09/27

Prileti iz SEVERA :

CN1 – CN 2* – down wind RWY 27/09

Prileti iz JUGOZAHODA :

CS1 –CS2 – down wind RWY 09 /27

*** POZOR na LJ-P1 - NEK / Nuklearno Elektrarno Krško**

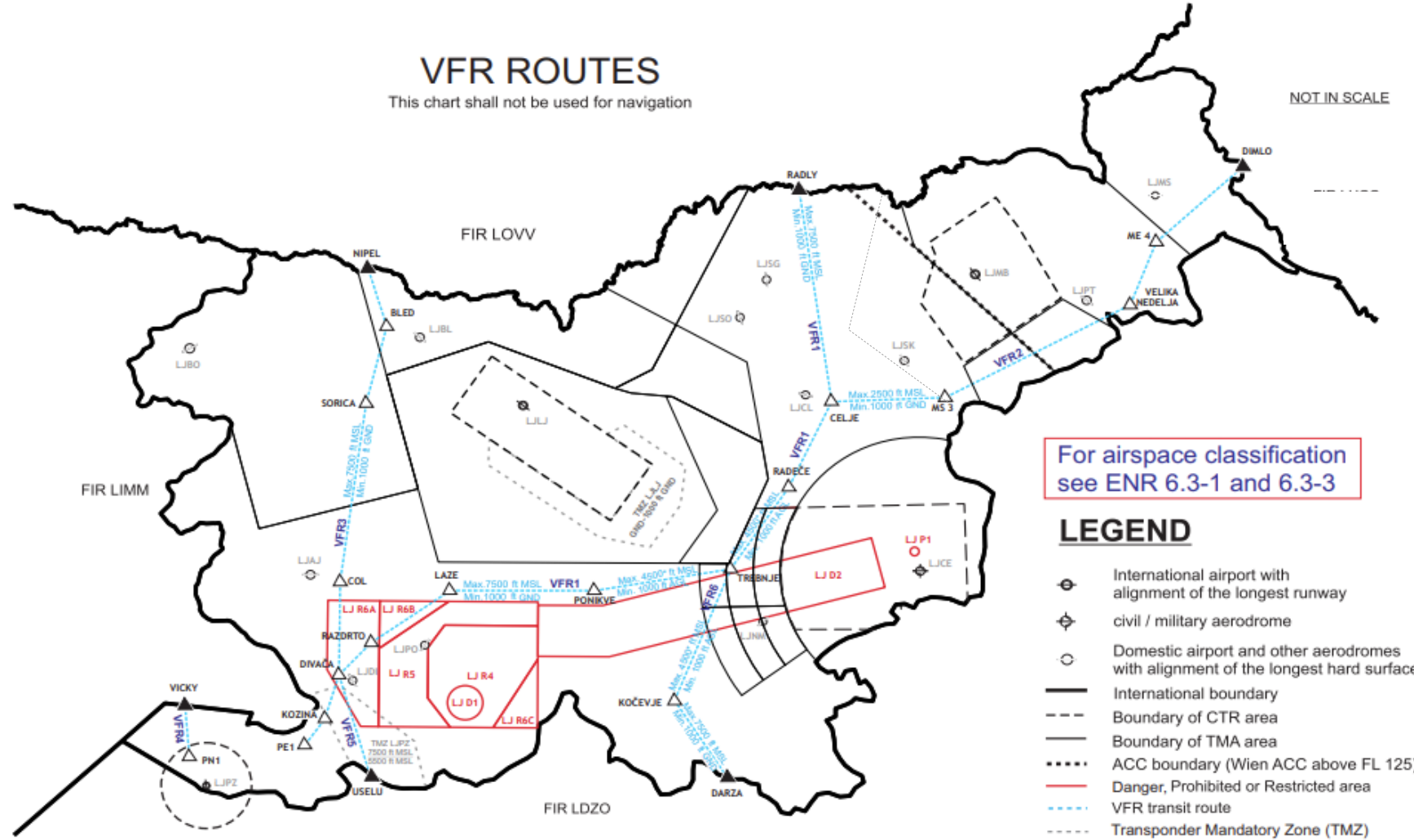


AMENDMENT: VFR Route 6 realignment, note to upper limit on VFR1 and VFR6 added

VFR ROUTES

This chart shall not be used for navigation

NOT IN SCALE



For airspace classification
see ENR 6.3-1 and 6.3-3

LEGEND

- International airport with alignment of the longest runway
- civil / military aerodrome
- Domestic airport and other aerodromes with alignment of the longest hard surface
- International boundary
- Boundary of CTR area
- Boundary of TMA area
- ACC boundary (Wien ACC above FL 125)
- Danger, Prohibited or Restricted area
- VFR transit route
- Transponder Mandatory Zone (TMZ)
- Compulsory reporting point
- Non-compulsory reporting point

*Outside operational hours of CERKLJE APP / TWR Upper limit on segment of VFR Recommended Route is 7500 ft AMSL

AIP SLOVENIA

VFR ROUTES

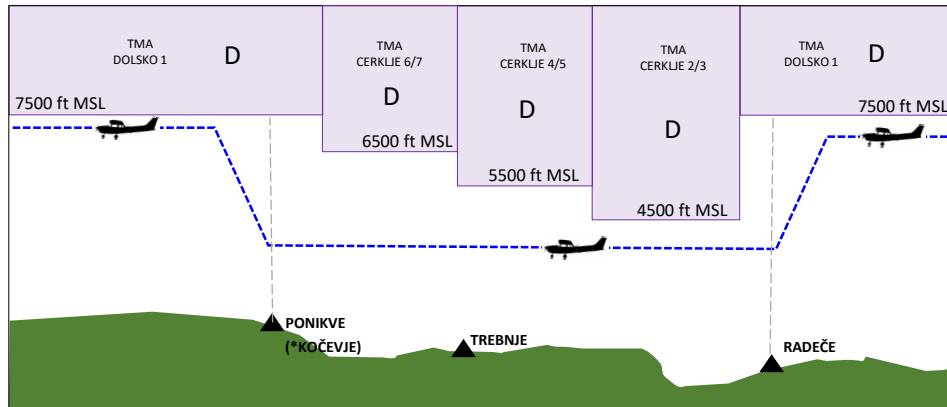
ENR 6.3 - 15
20 MAY 2021

© Slovenia Control, Ltd.

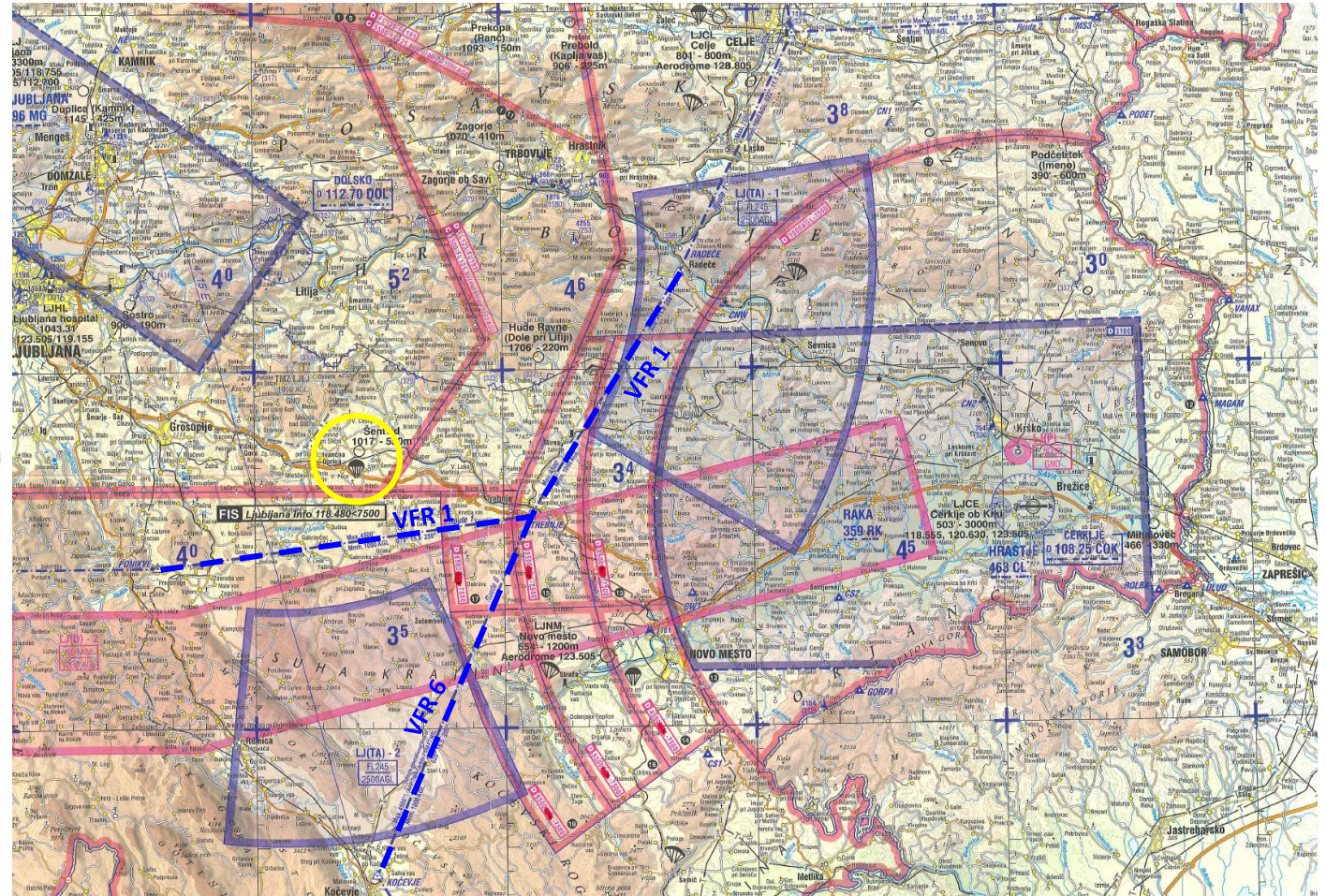
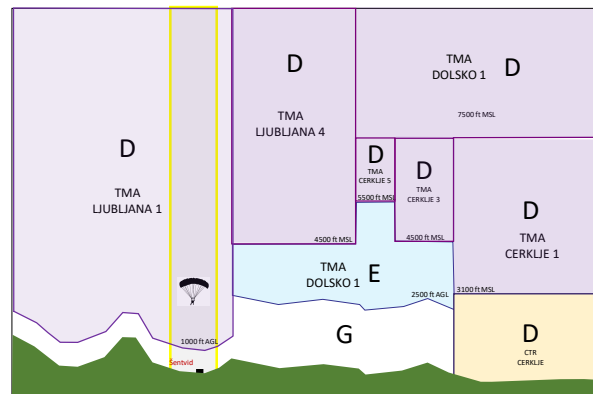
AIRAC AMDT 109/2021

VFR 1 IN VFR 6 PRIPOROČENE VFR ZRAČNE POTEI **ZNOTRAJ** **OBRATOVALNEGA ČASA** TWR/APP CERKLJE

Višinski profil leta VFR 1 in VFR 6*

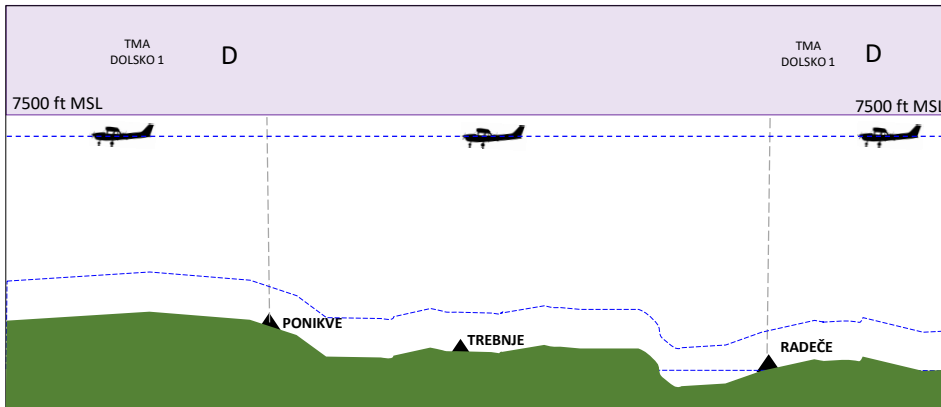


VFR Recommended Route 1 in 6 sta na področju TMA Cerklje 2-7 **ZNOTRAJ** obratovalnega časa TWR/APP Cerklje znižani iz 7500 ft MSL na 4500 ft MSL.

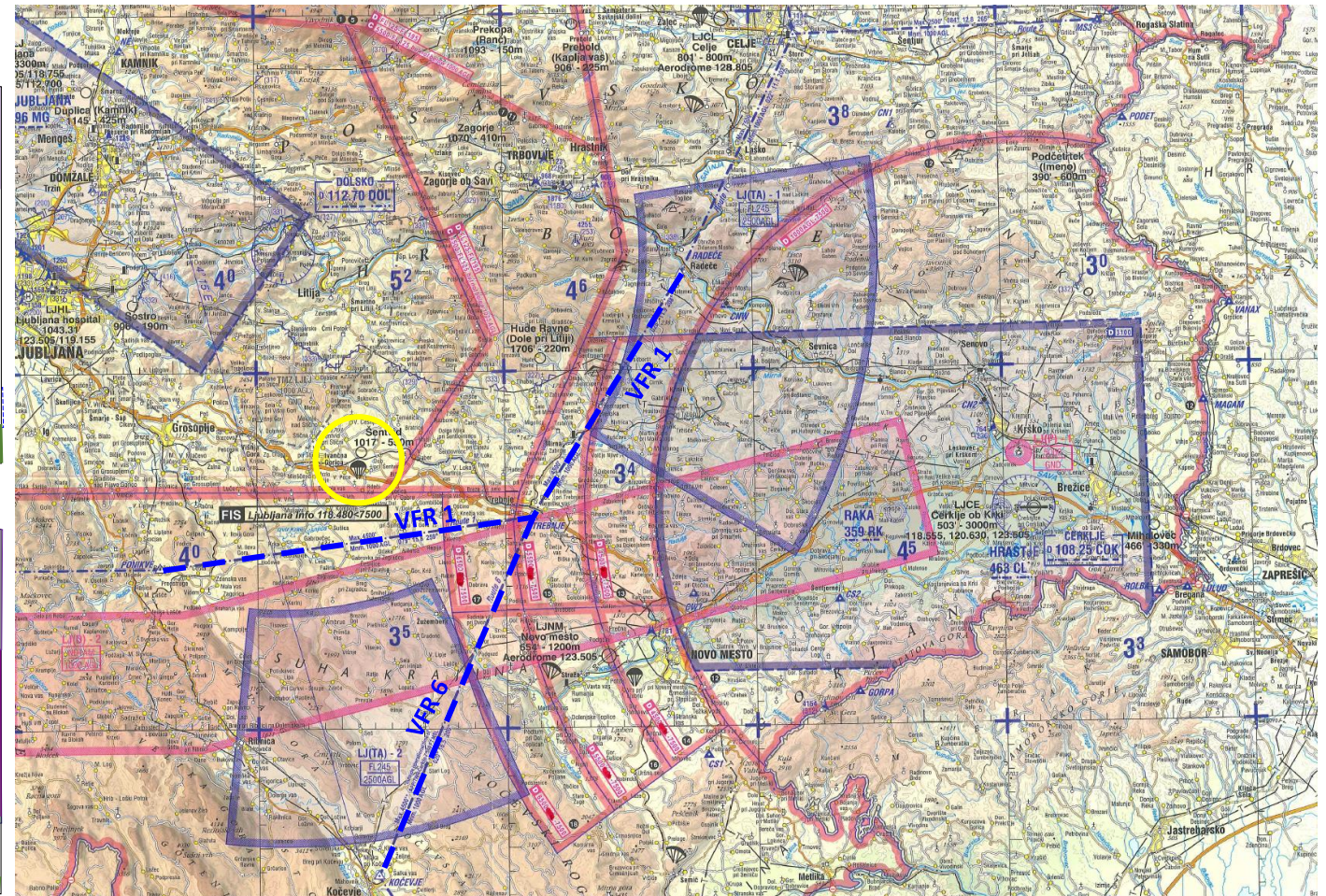
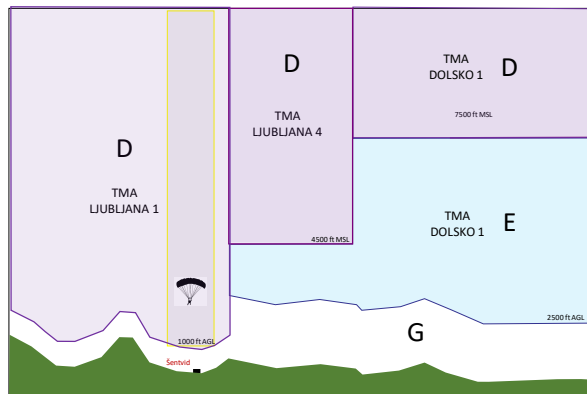


VFR 1 IN VFR 6 PRIPOROČENE VFR ZRAČNE POTI IZVEN OBRATOVALNEGA ČASA TWR/APP CERKLJE

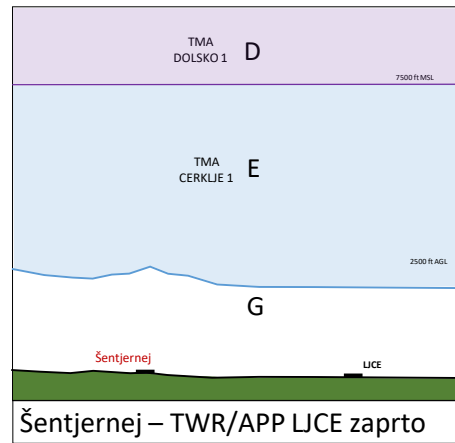
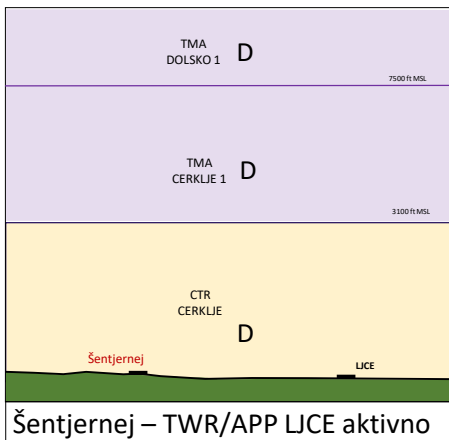
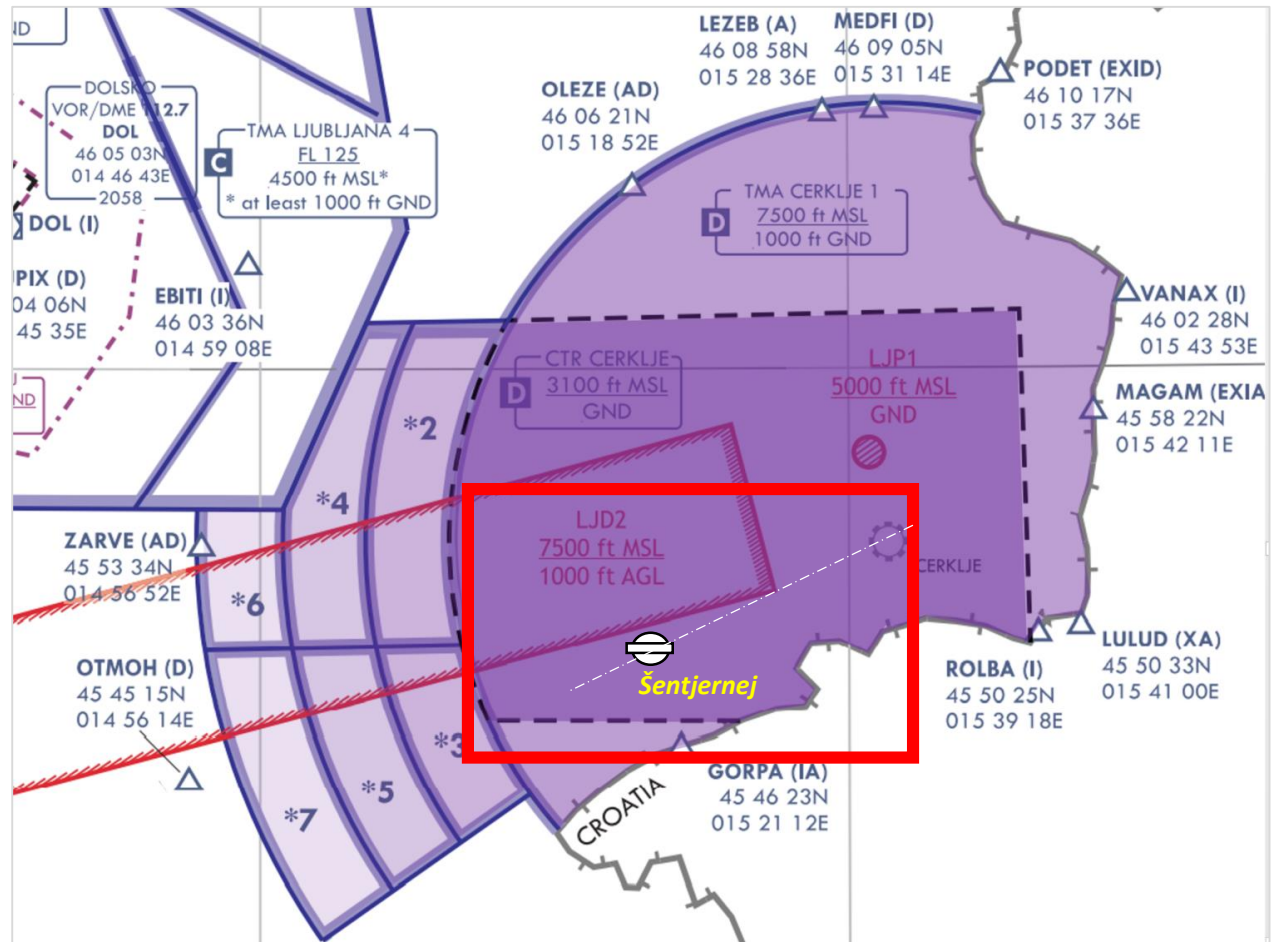
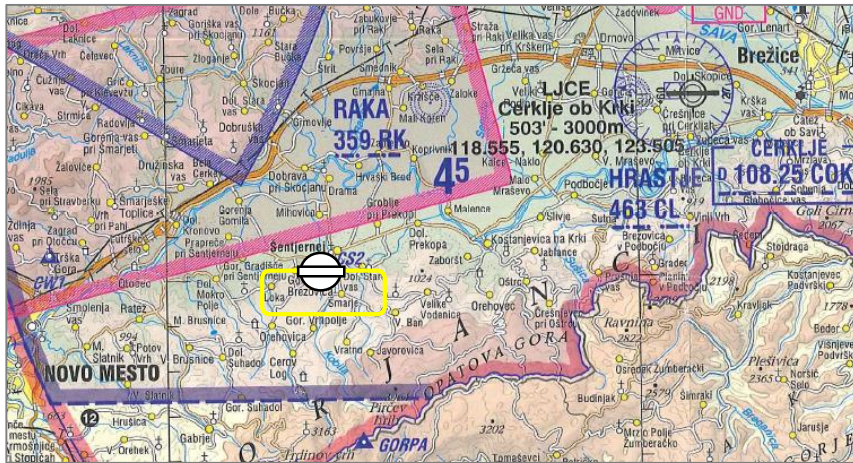
Višinski profil VFR 1 in 6



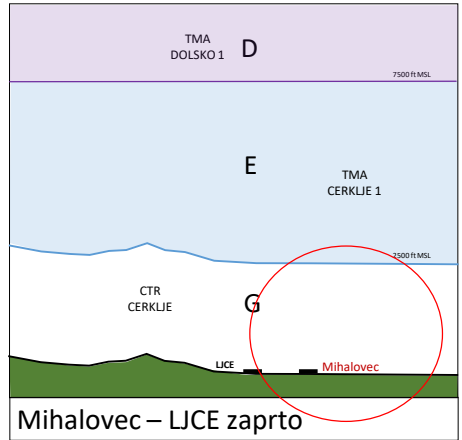
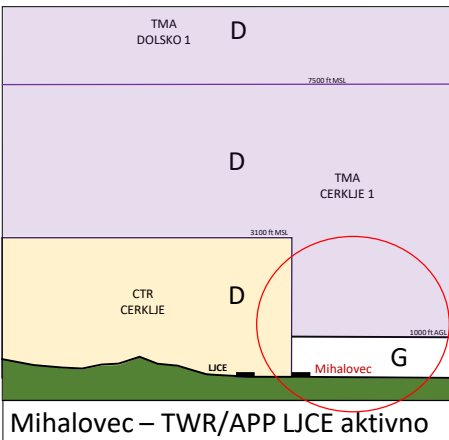
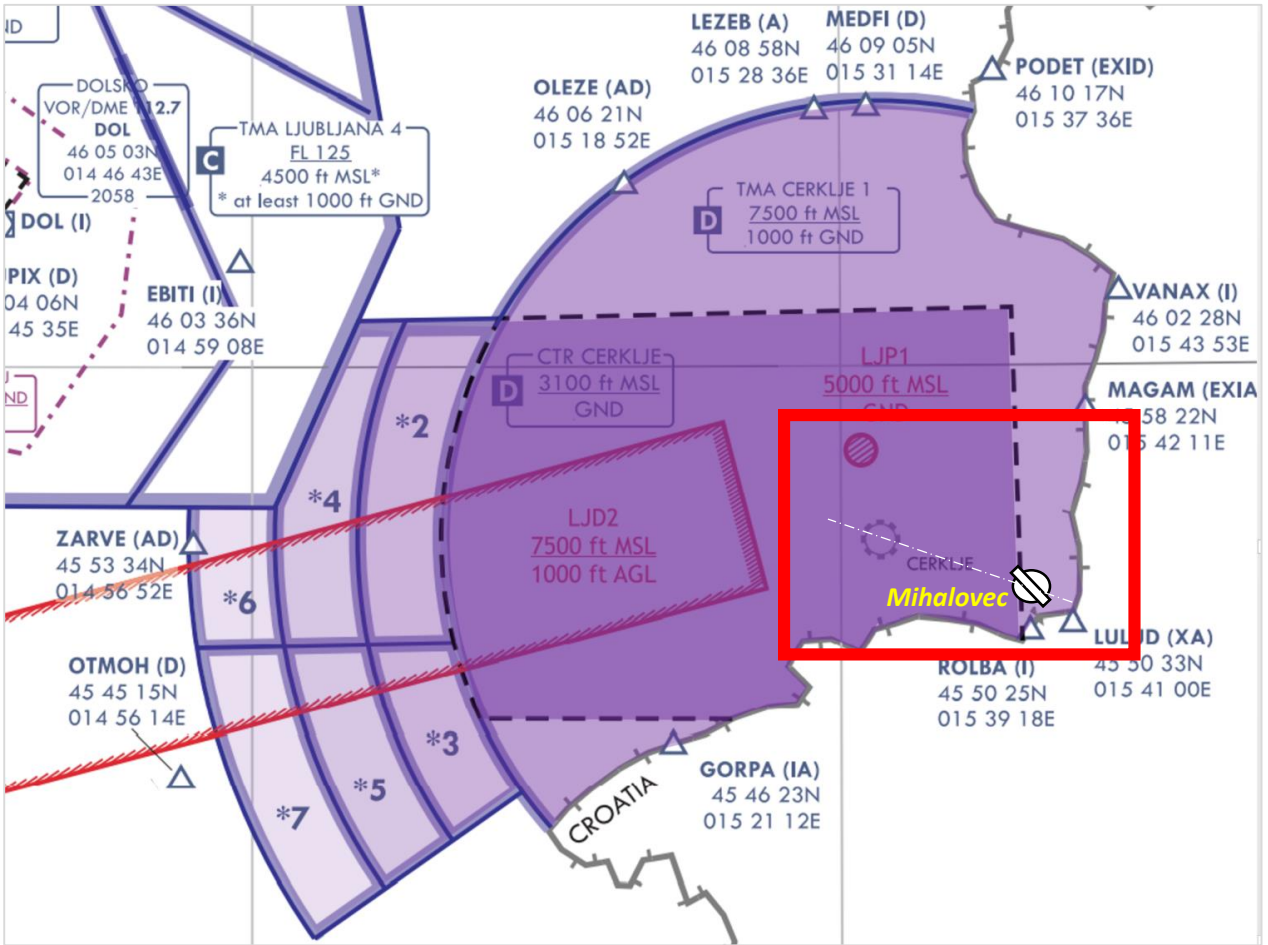
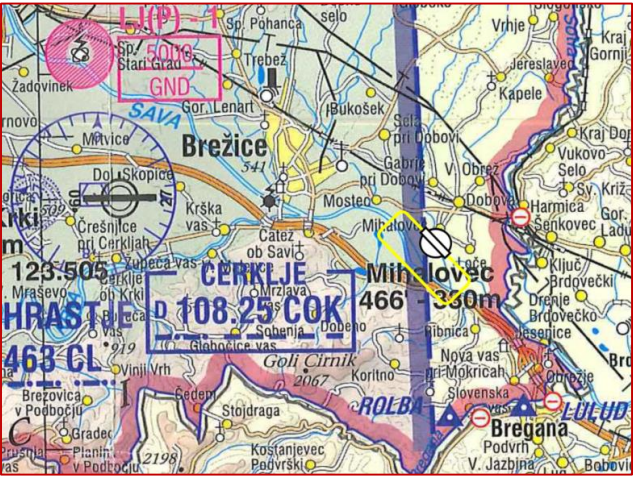
VFR Recommended Route 1 in 6 na področju TMA Cerklje 2-7 IZVEN obratovalnega časa TWR/APP Cerklje ohranjata priporočeno višino od 1000 ft AGL do 7500 ft MSL.



Vzletišče IKAR Šentjernej



Vzletišče Mihalovec



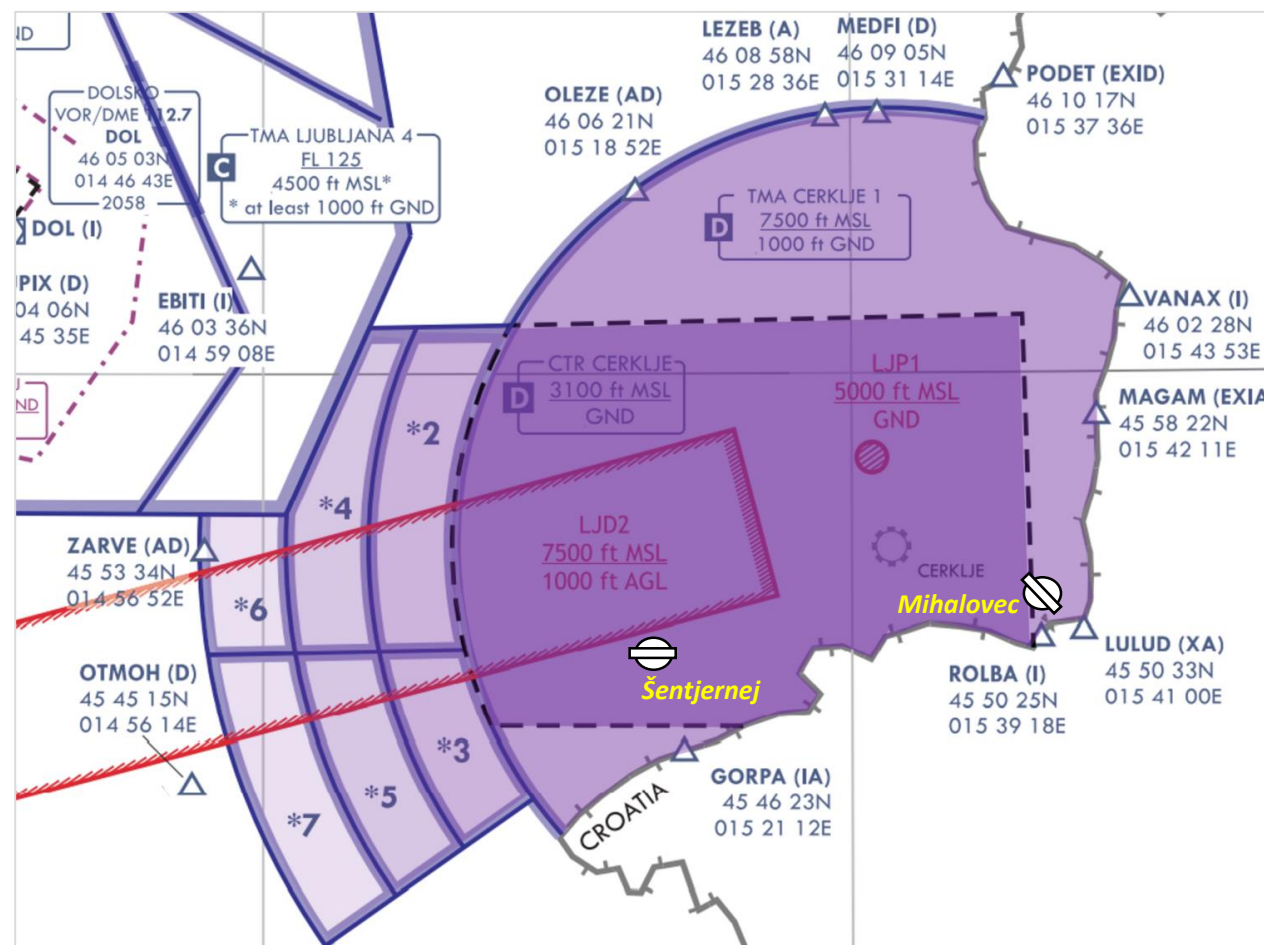
Mihalovec – TWR/APP LICE aktivno

Mihalovec – LICE zaprto

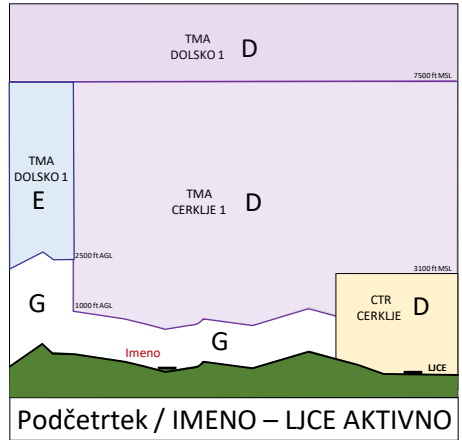
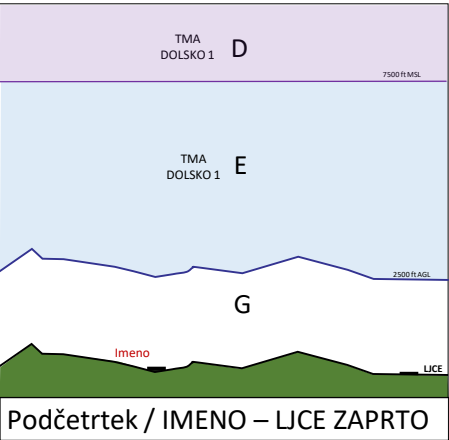
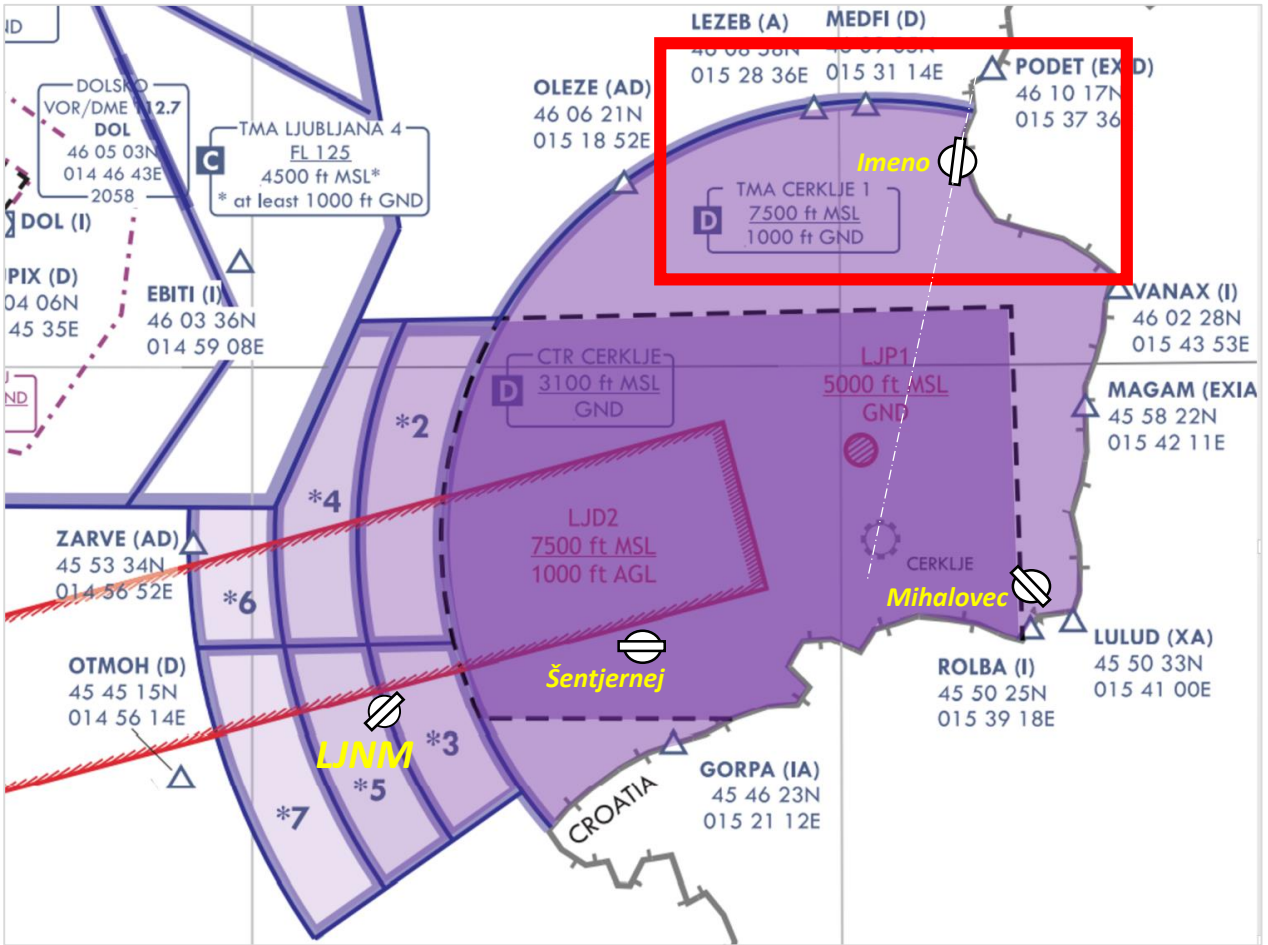
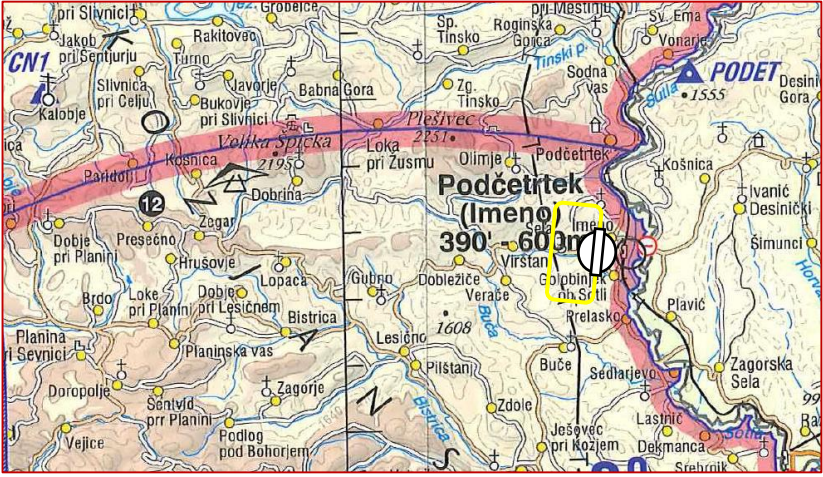
Vzletišči IKAR Šentjernej in Mihalovec

Kako najaviti svojo aktivnost na vzletišču ?

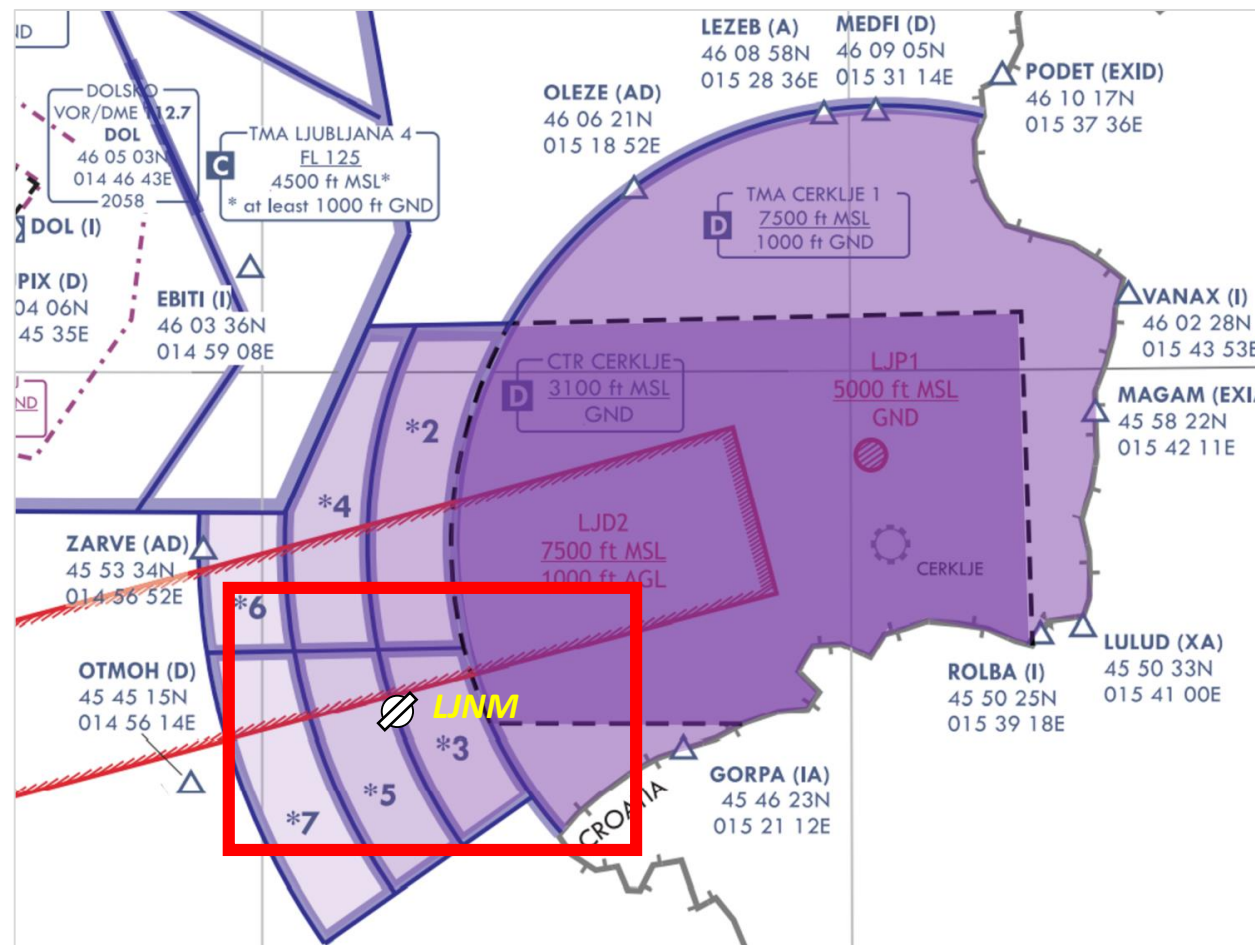
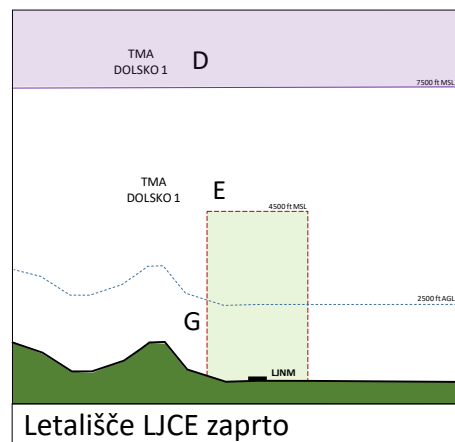
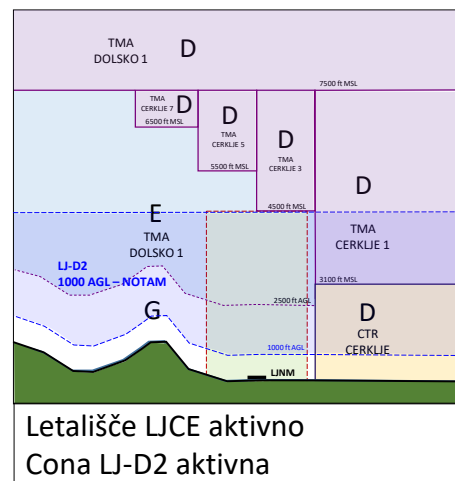
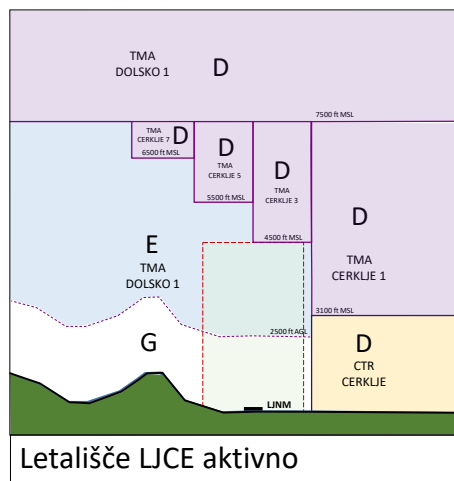
- Preveri ODPRTOST LJCE
- Preveri NOTAM sporočila
- Izven časa odprtosti lahko letiš do trenutka ko se letališče oz. TWR/APP odpre. Takrat si se dolžan javiti na kanal TWR/APP Cerklje.
- Če je letališče TWR/APP Cerklje aktivno se letenje koordinira 30 minut pred željeno aktivnostjo na vzletišču.
- Takoj ko je možno se po vzletu pilot javi na kanalu TWR/APP Cerklje.
- Po prenehanju aktivnosti se sporoči TWR/APP prenehanje aktivnosti – najkasneje 15 minut po prenehanju.



Vzletišče Podčetrtek - Imeno



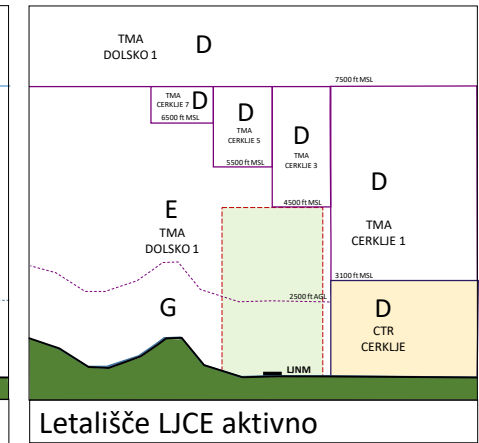
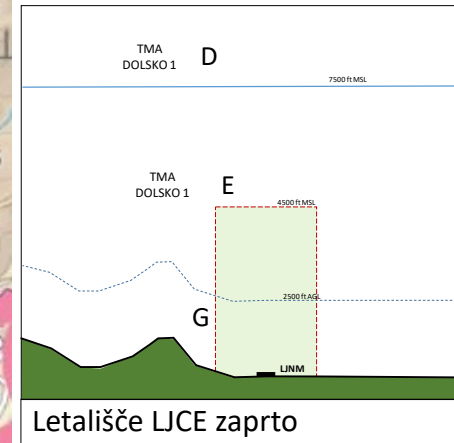
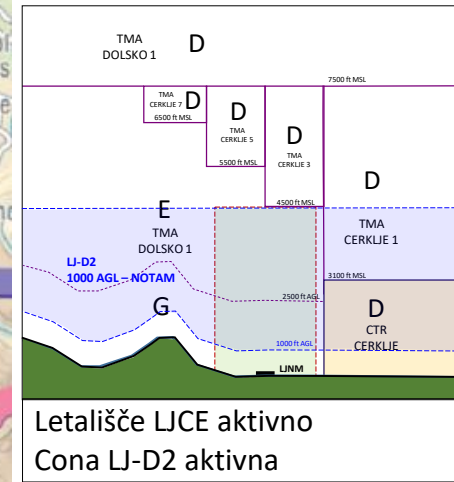
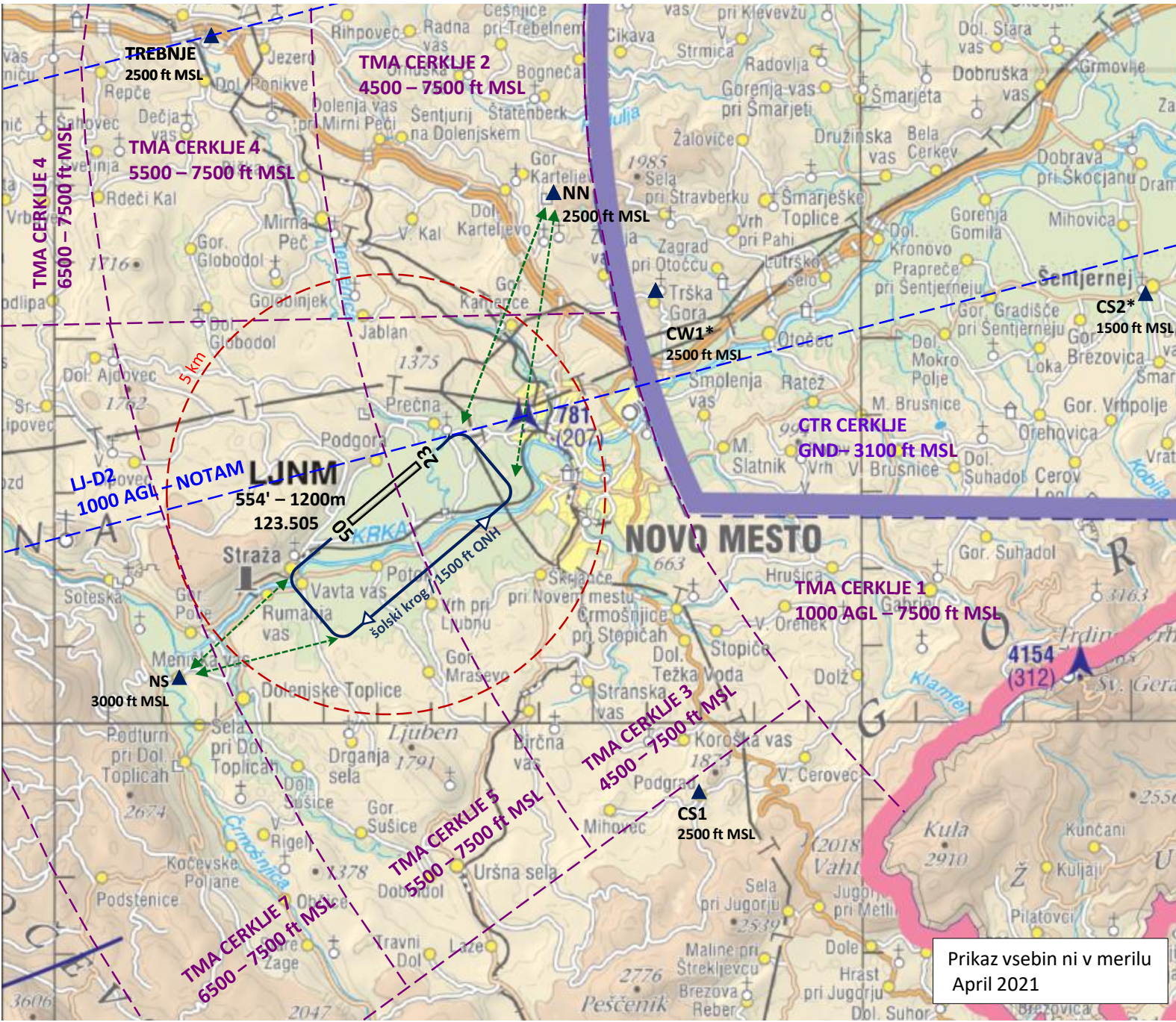
Športno letališče Novo mesto - LJNM



Priloga 4a Prikaz zračnega prostora na področju letališča Novo mesto - LJNM



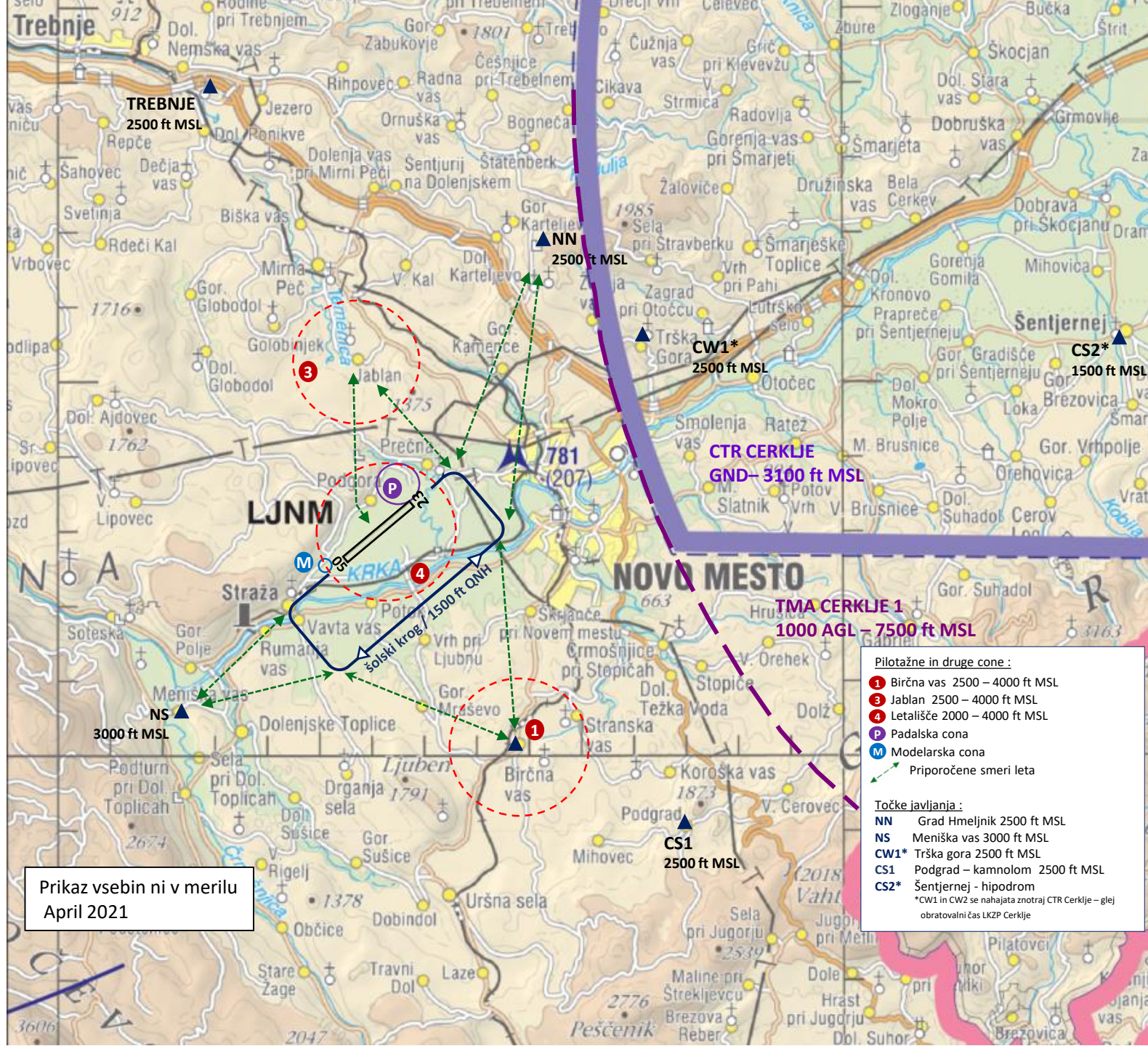
NOVO MESTO - LJNM



Prikaz vsebin ni v merilu
April 2021

Trenažne in druge cone letališča Novo mesto – LJNM

*Prikaz zr. prostora do višine 4500 ft MSL



Pilotažne in druge cone :

- 1 Birčna vas 2500 – 4000 ft MSL
- 3 Jablan 2500 – 4000 ft MSL
- 4 Letališče 2000 – 4000 ft MSL
- P Padalska cona
- M Modelarska cona

Priporočene smeri leta

Točke javljanja :

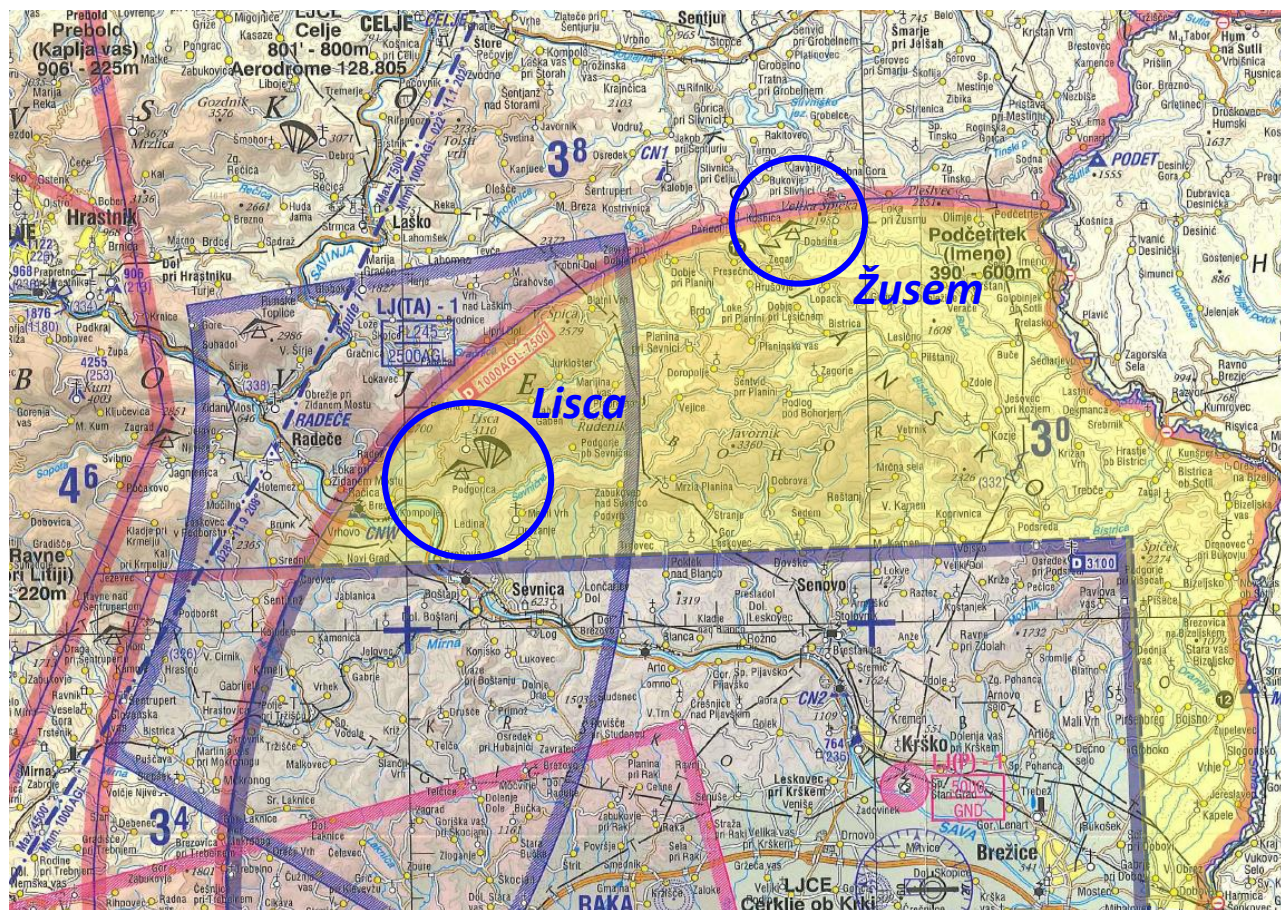
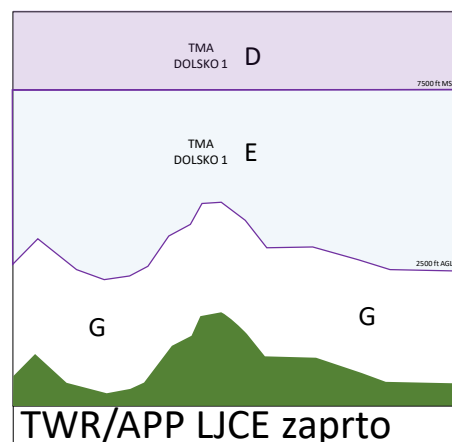
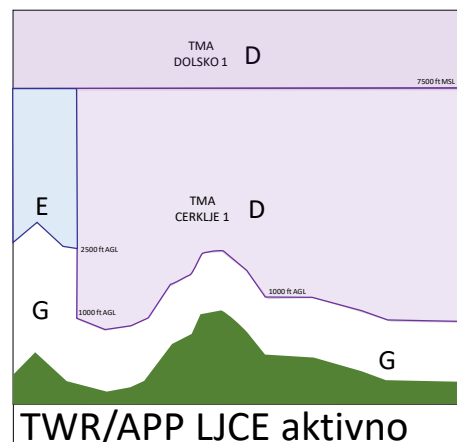
- NN Grad Hmeljnik 2500 ft MSL
- NS Meniška vas 3000 ft MSL
- CW1* Trška gora 2500 ft MSL
- CS1 Podgrad – kamnolom 2500 ft MSL
- CS2* Šentjernej - hipodrom

*CW1 in CW2 se nahajata znotraj CTR Cerklje – glej obratovalni čas LKZP Cerklje

Prikaz vsebin ni v merilu
April 2021

Prosto letenje jadralni padalci/zmajarji

Področje pod CERKLJE 1 TMA

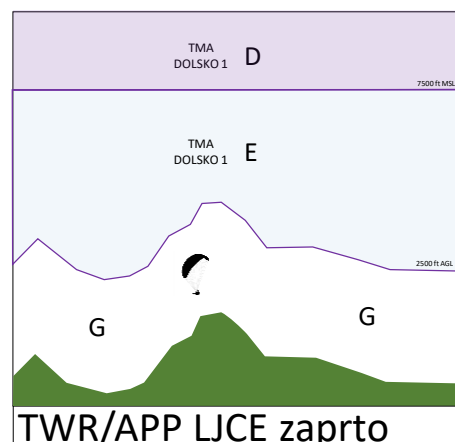
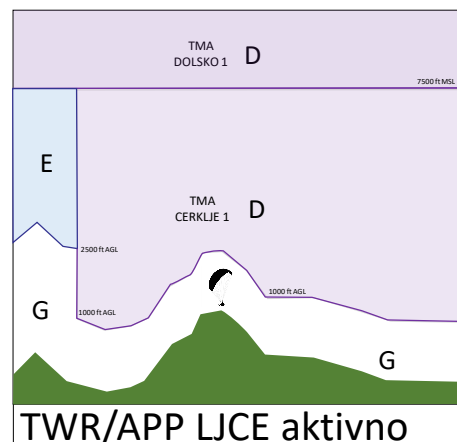


Kako preveriti razmere glede zračnega prostora ?

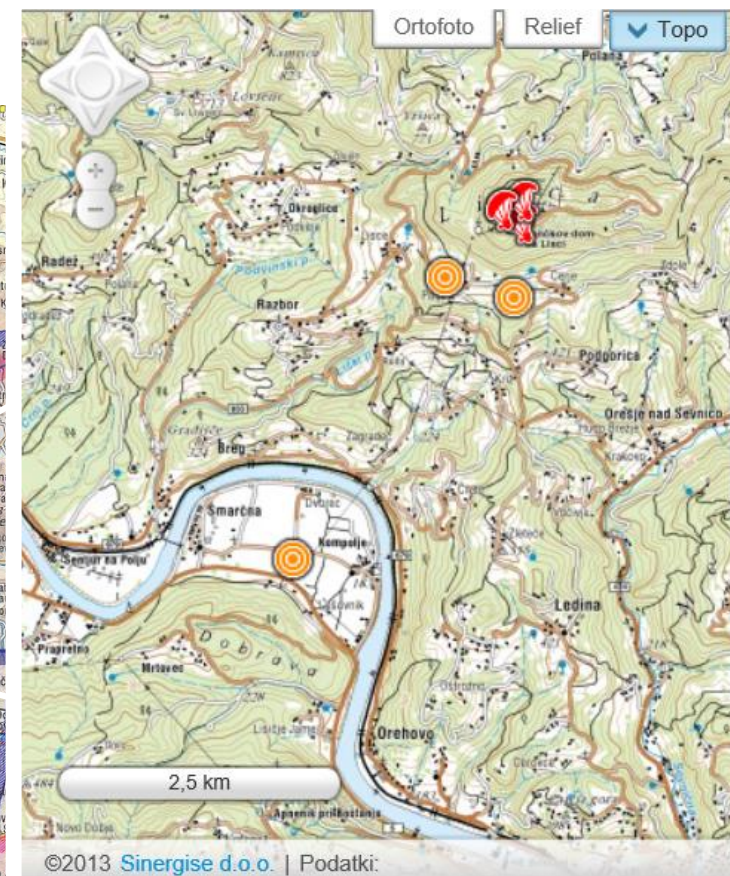
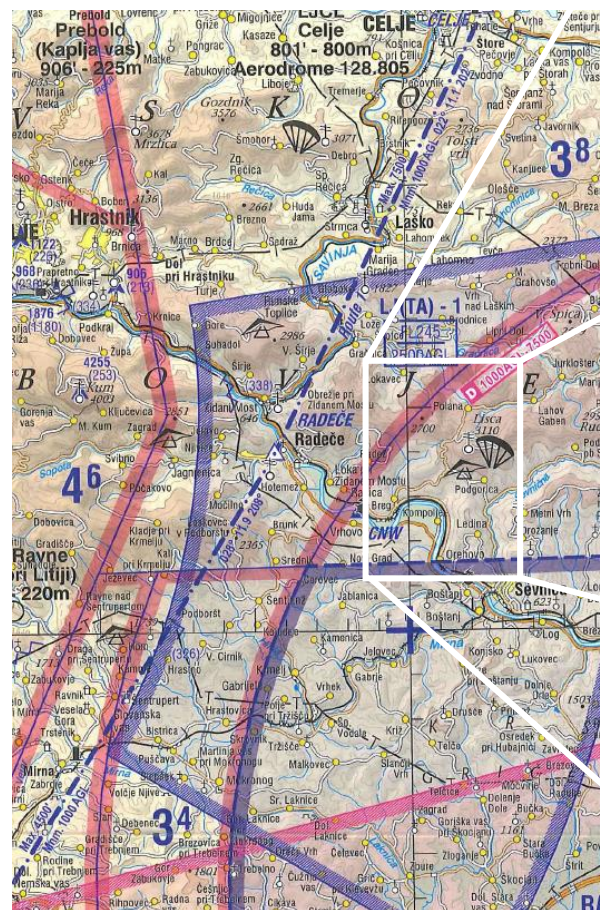
- Preveri ODPRTOST LJCE AIP Slovenia / NOTAM
- Preveri NOTAM sporočila
- Izven časa odprtosti lahko letiš do trenutka ko se letališče oz. TWR/APP odpre.

Prosto letenje jadralni padalci/zmajarji

Področje pod CERKLJE 1 TMA



Vzletna točka LISCA



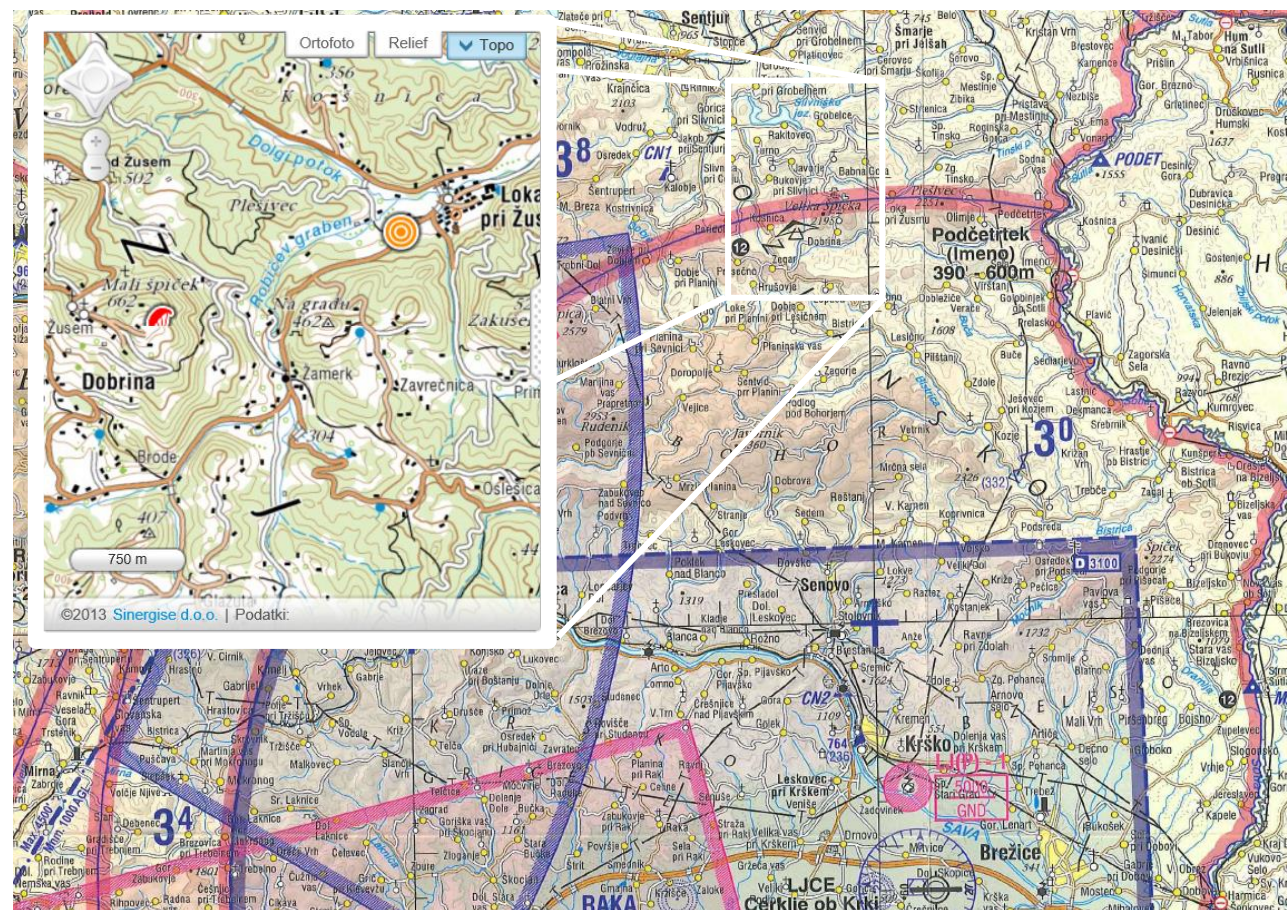
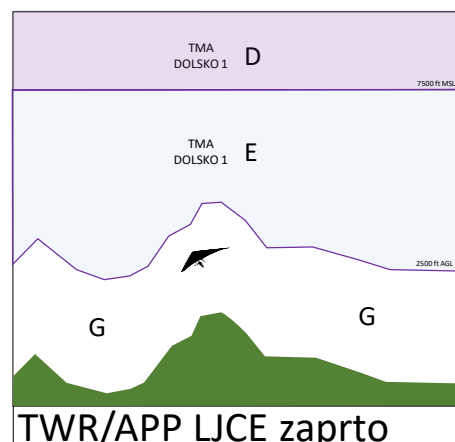
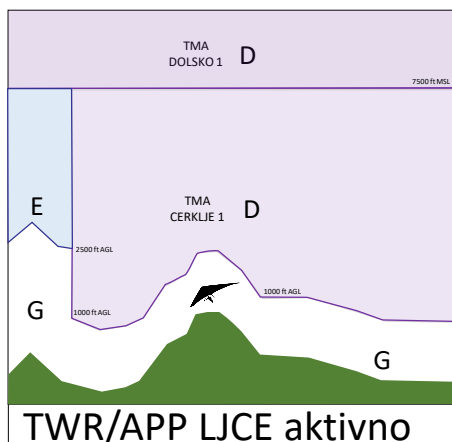
Kako preveriti razmere glede zračnega prostora ?

- Preveri ODPRTOST LJCE AIP Slovenia / NOTAM
- Preveri NOTAM sporočila

Prosto letenje jadralni padalci/zmajarji

Področje pod CERKLJE 1 TMA

Vzletna točka ŽUSEM

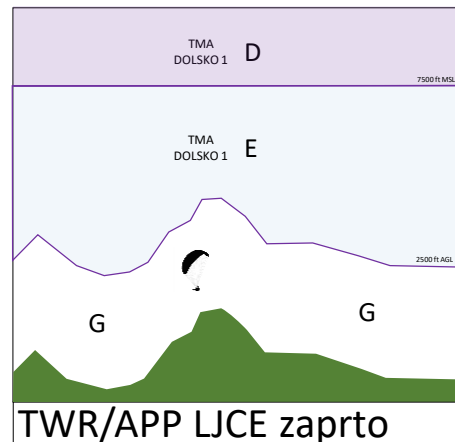
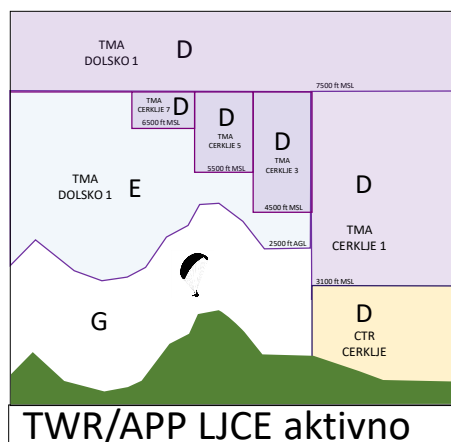


Kako preveriti razmere glede zračnega prostora ?

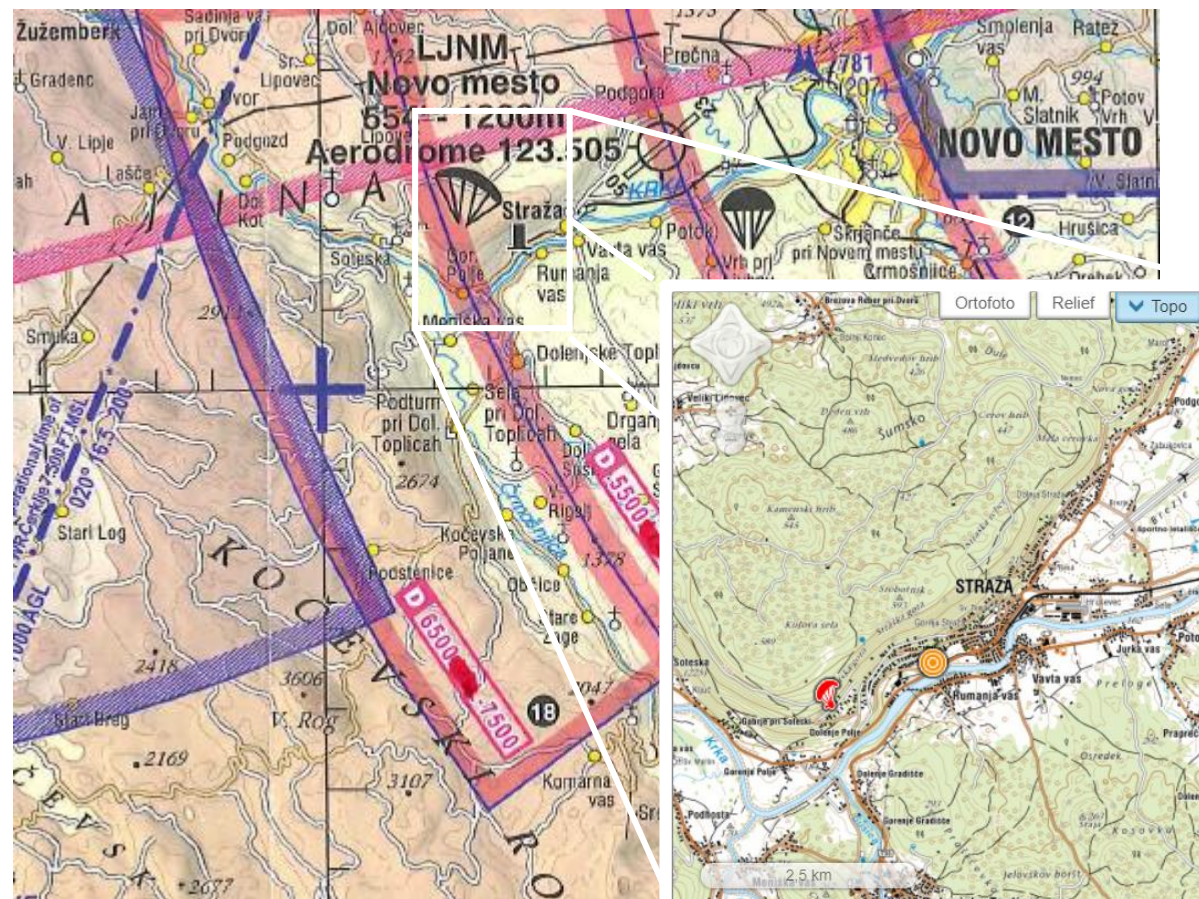
- Preveri ODPRTOST LJCE AIP Slovenia / NOTAM
- Preveri NOTAM sporočila

Prosto letenje jadralni padalci/zmajarji

Področje pod CERKLJE 3, 5, 7 TMA



Vzletna točka Straški hrib (Peter)



Kako preveriti razmere glede zračnega prostora ?

- Preveri ODPRTOST LJCE AIP Slovenia / NOTAM
- Preveri NOTAM sporočila

LJCE INSTRUMENTNE PROCEDURE



Načrt implementacije instrumentnih procedur vsebuje nabor SID/STAR procedur, ki bo omogočal t.i. krožni promet.

Glede na doslej prejete odločbe CAA so za instrumentne prilete na voljo instrumentni prilet preko točke ZARVE in OTMOH, za odlete pa odletni instrumentni / SID proceduri na točko OTMOH.

Od procedur končnega prileta / APPROACH procedure sta potrjeni in objavljeni ILS Z RWY 09 in VOR RWY 09 ter VISUAL APPROACH CHART – CIRCLING

VFR prometu so namenjene VFR točke javljanja, skladno s karto VISUAL APPROACH CHART - LJCE

PREGLED ODOBRENIH INSTRUMENTNIH PROCEDUR ZA LJCE

STAR : POHES1A, **ZARVE1A**, OLEZE1A, LEZEB1A;

SID RWY 27 : OLEZE1D, ZARVE1D, **OTMOH1D**

SID RWY 09 : OLEZE1E, ZARVE1E, **OTMOH1E**, MEDFI1E;

APPROACH : **ILS Z RWY 09**

ILS Y RWY 09

VOR RWY09

NDB RWY 09

VISUAL APPROACH WITH PRESCRIBED TRACKS



KONTROLA
ZRAČNEGA
PROMETA
SLOVENIJE

SID OTMOH 1E (RWY09)

AIP SLOVENIA

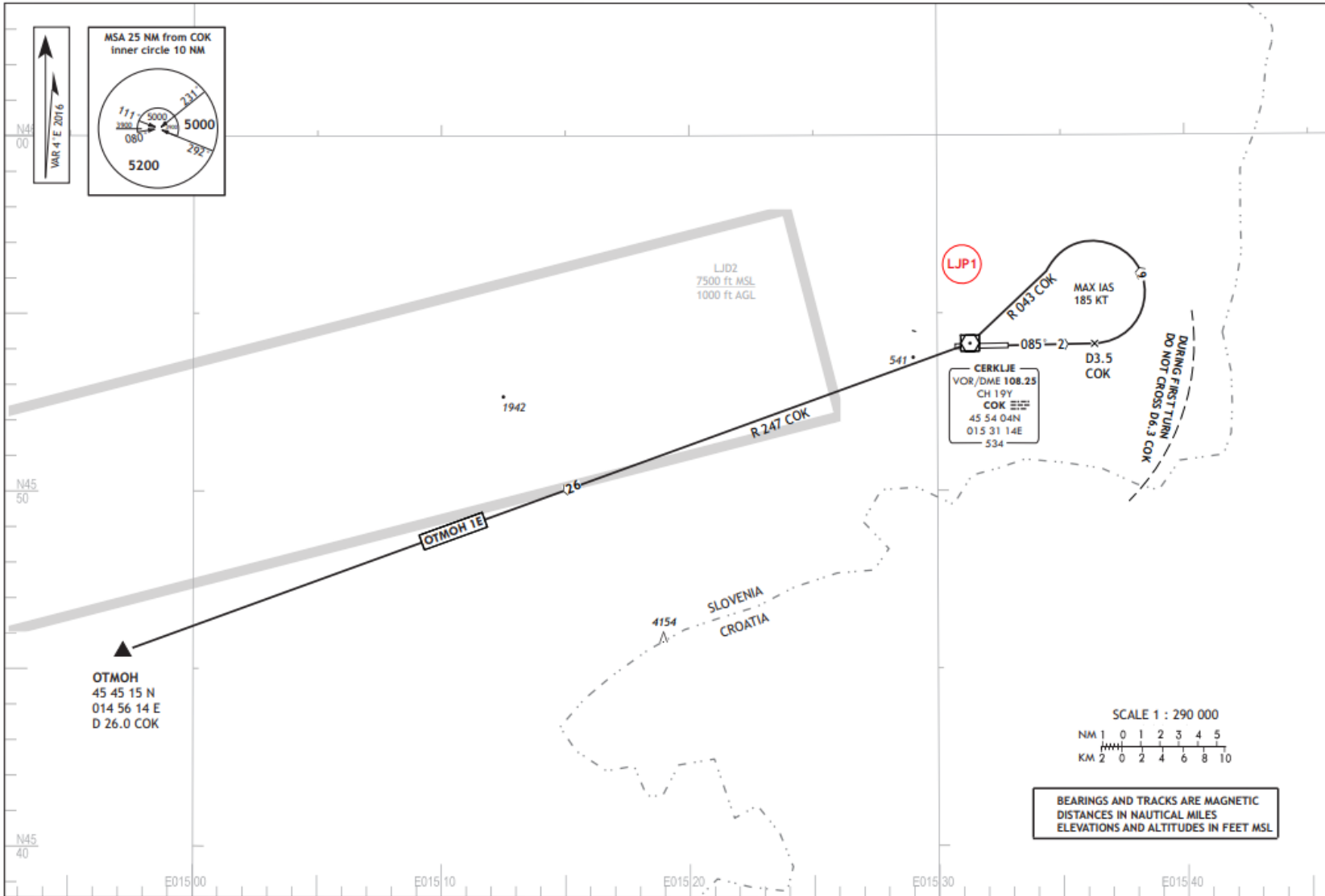
LJCE AD 2.24.08 - 1
22 APR 2021

STANDARD DEPARTURE CHART -
INSTRUMENT (SID)
TRANSITION ALTITUDE
10500

CERKLJE TOWER 118.555
CERKLJE TOWER 127.230
CERKLJE APPROACH 118.555
CERKLJE APPROACH 127.230

Cerklje ob Krki / CERKLJE
RWY 09
OTMOH 1E

AMENDMENT: New procedure OTMOH 1E





KONTROLA
ZRAČNEGA
PROMETA
SLOVENIJE

SID OTMOH 1D (RWY27)

AIP SLOVENIA

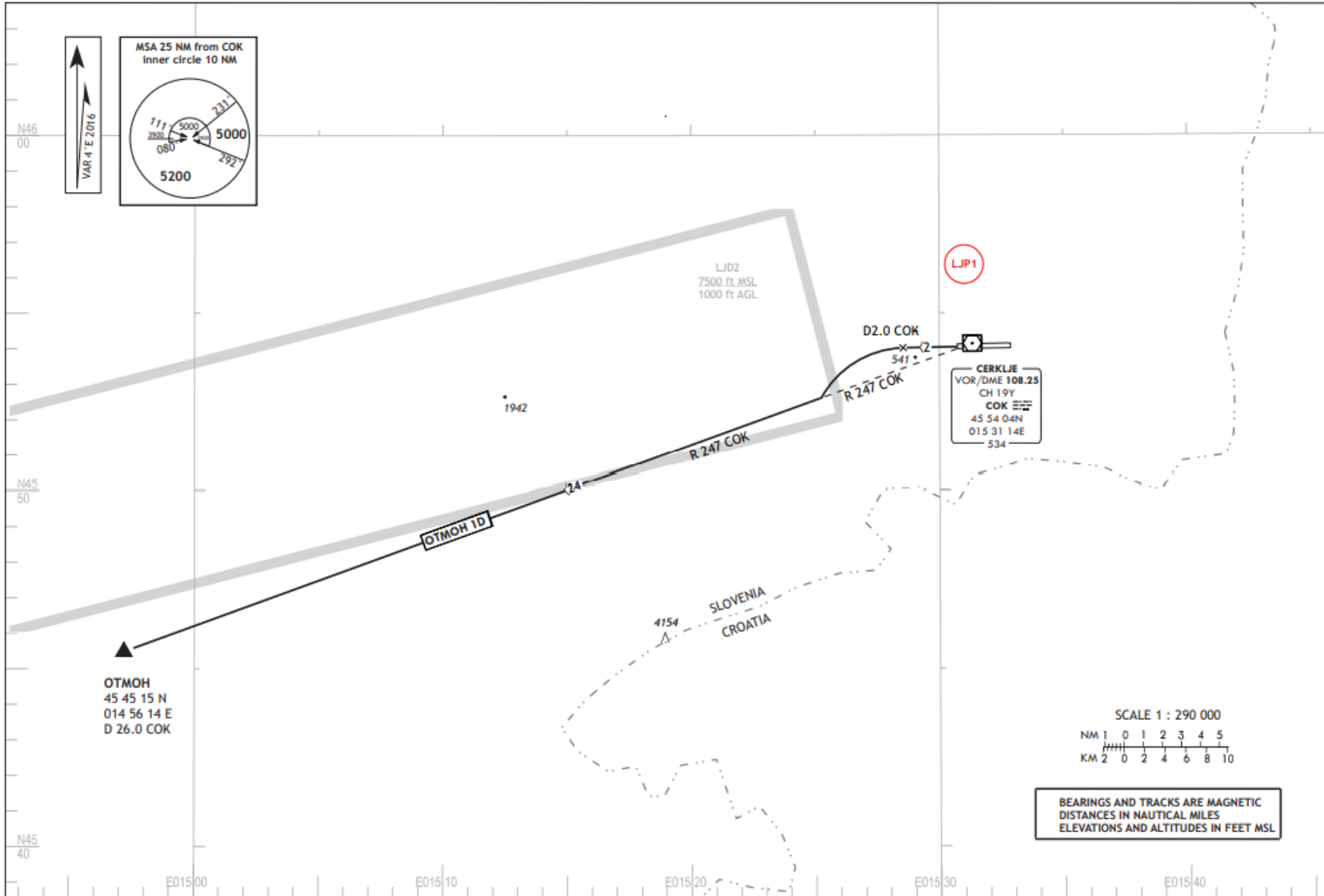
LJCE AD 2.24.08 - 3
22 APR 2021

STANDARD DEPARTURE CHART -
INSTRUMENT (SID)
TRANSITION ALTITUDE
10 500

CERKLJE TOWER	118.555
CERKLJE TOWER	127.230
CERKLJE APPROACH	118.555
CERKLJE APPROACH	127.230

Cerklje ob Krki / CERKLJE
RWY 27
OTMOH 1D

AMENDMENT: New procedure OTMOH 1D



BEARINGS AND TRACKS ARE MAGNETIC
DISTANCES IN NAUTICAL MILES
ELEVATIONS AND ALTITUDES IN FEET MSL

STAR ZARVE 1A



KONTROLA
ZRAČNEGA
PROMETA
SLOVENIJE

OVENIA

LJCE AD 2.24.10 - 1

20 MAY 2021

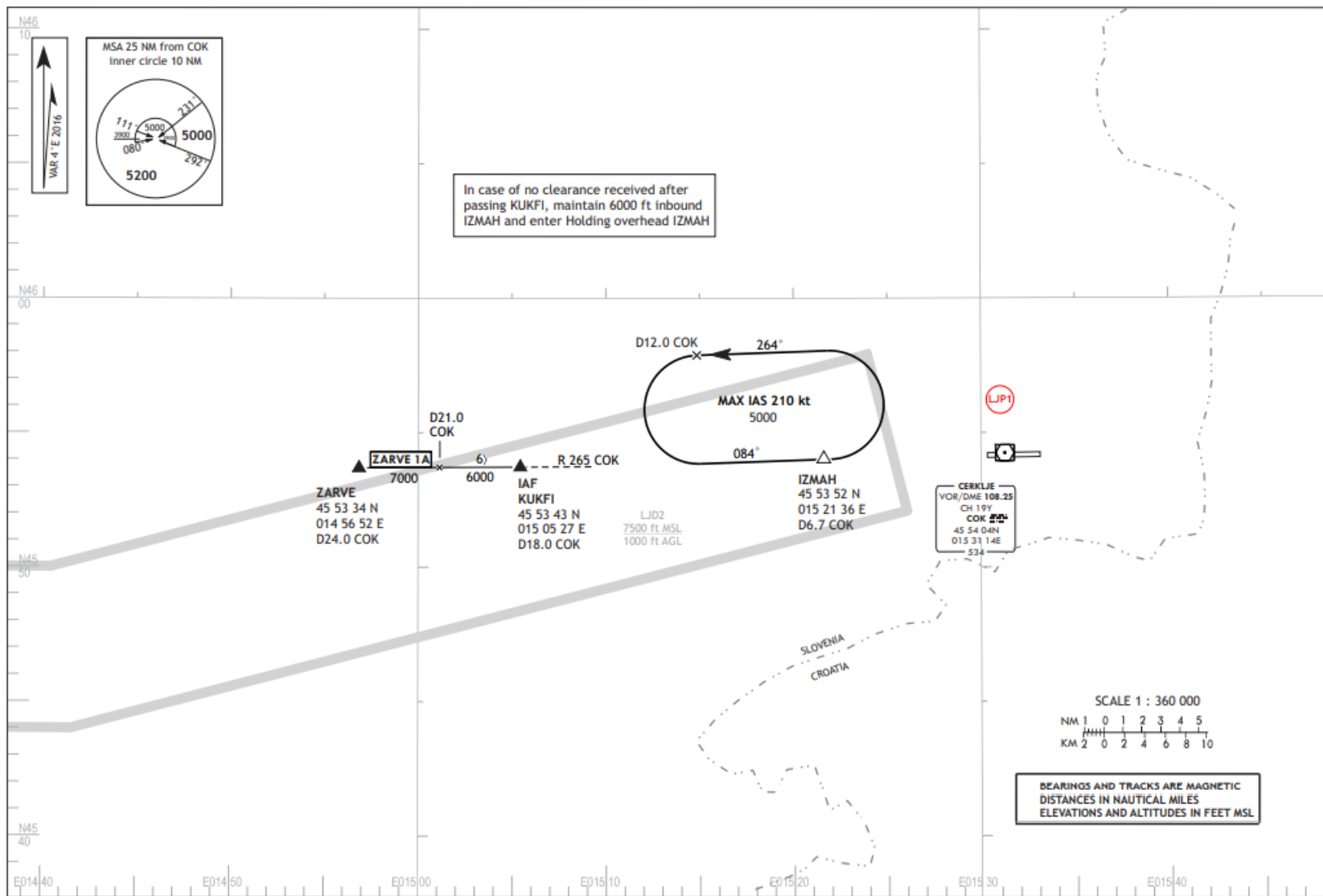
STANDARD ARRIVAL CHART -
INSTRUMENT (STAR)

TRANSITION ALTITUDE
10500

CERKLJE TOWER	118.555
CERKLJE TOWER	127.230
CERKLJE APPROACH	118.555
CERKLJE APPROACH	127.230

Cerklje ob Krki / CERKLJE
RWY 09
ZARVE1A

AMENDMENT: New NOTE, holding added



PROCEDURA PRECIZNEGA PRILETA CAT I - ILS Z RWY 09



AIP SLOVENIA

LJCE AD 2.24.12 - 1

20 MAY 2021

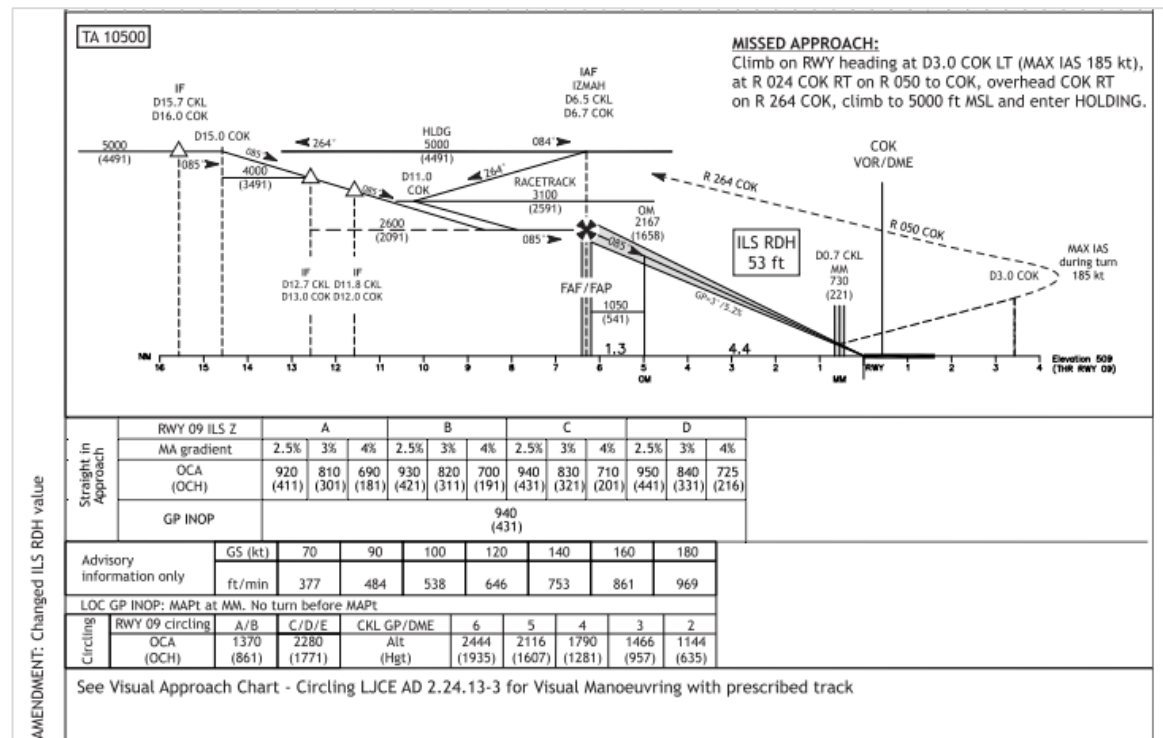
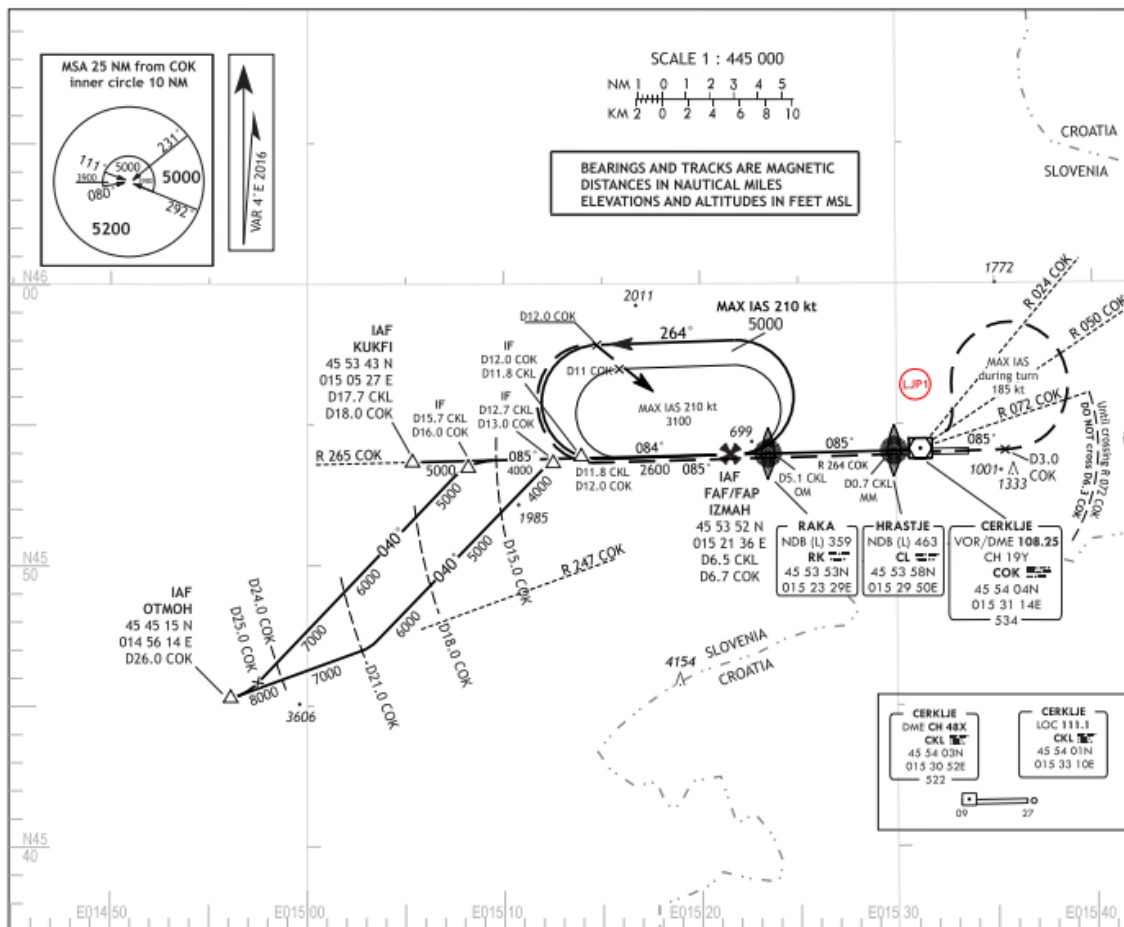
INSTRUMENT APPROACH CHART

AD ELEV 503 ft
HEIGHTS RELATED TO THR RWY 09 - ELEV 509 ft
HIGHEST ELEV TDZ 505 ft

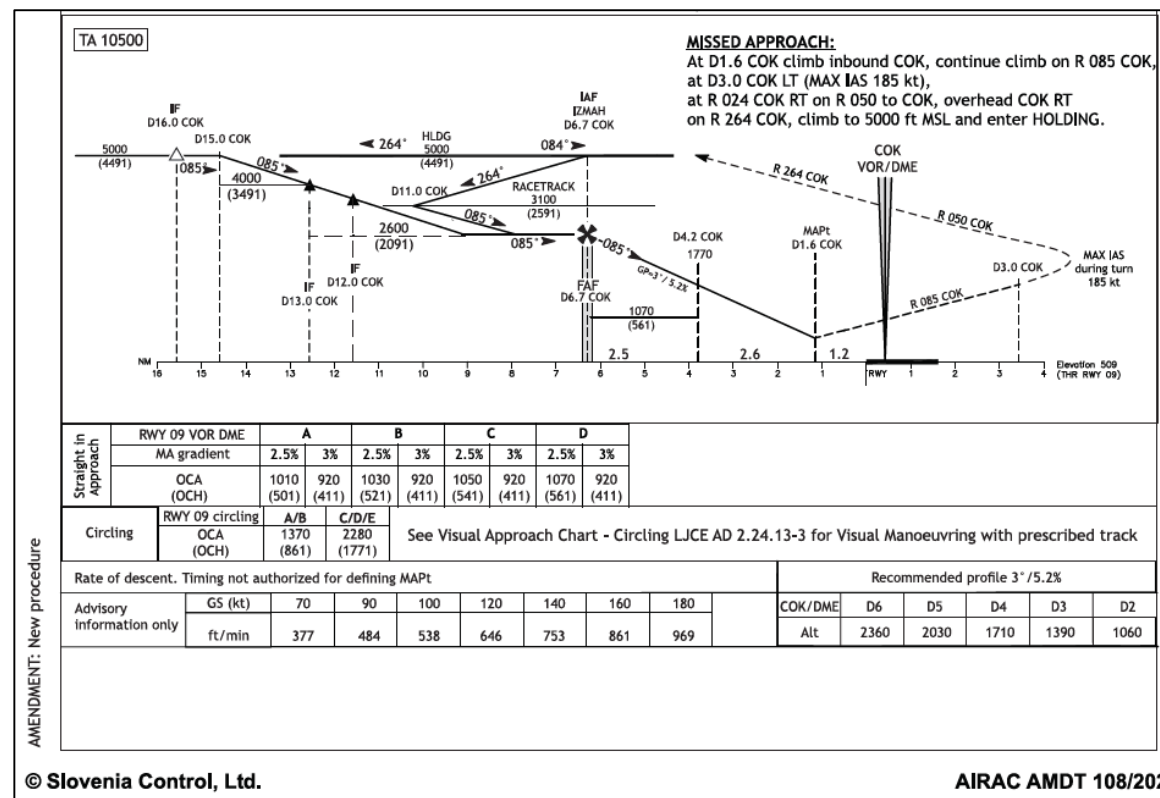
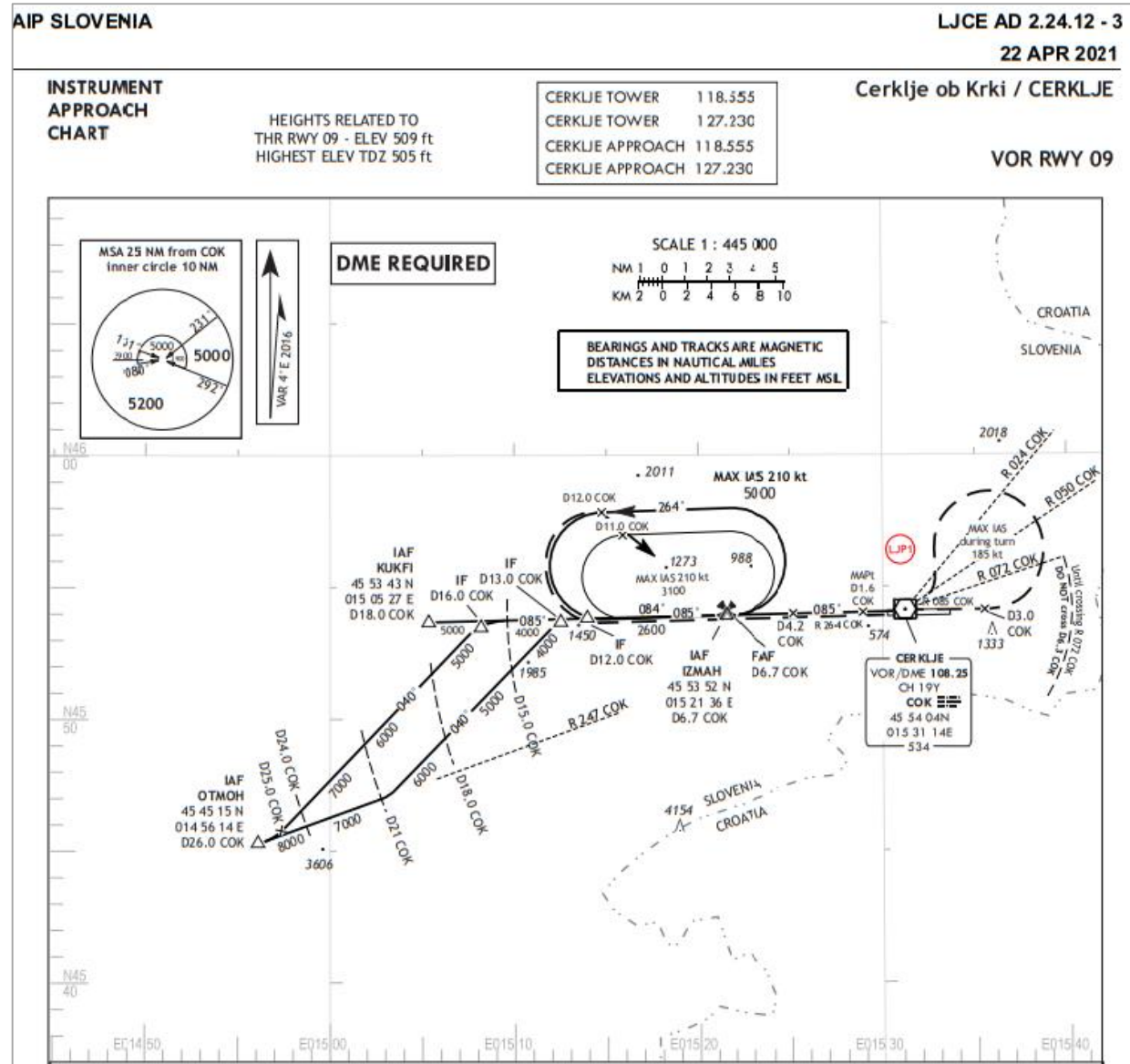
CERKLJE TOWER 118.555
CERKLJE TOWER 127.230
CERKLJE APPROACH 118.555
CERKLJE APPROACH 127.230

Cerklje ob Krki / CERKLJE

ILS Z RWY 09



PROCEDURA NEPRECIZNEGA PRILETA VOR RWY 09

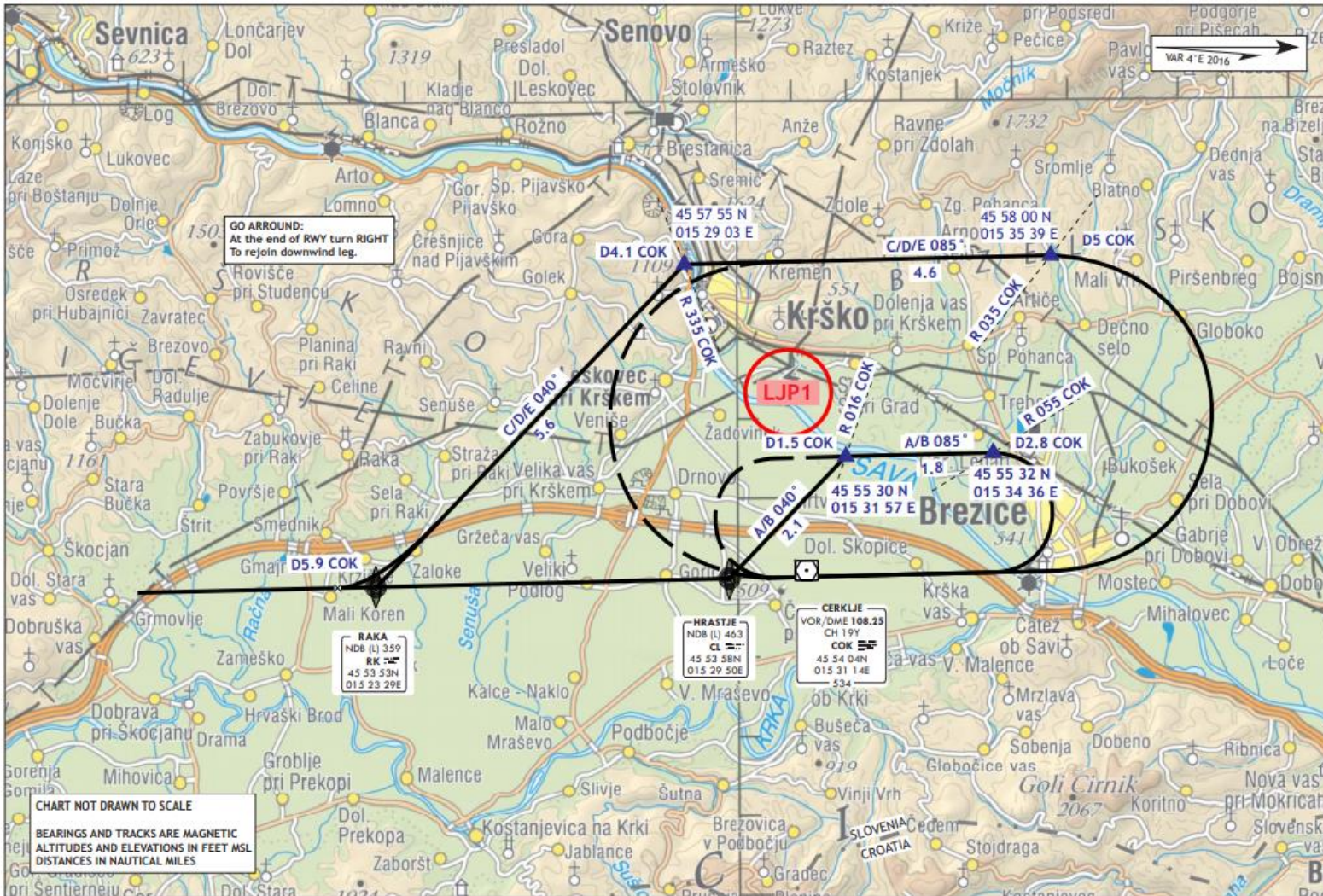


VISUAL APPROACH CHART - CIRCLING



© Slovenia Control, Ltd.

AMENDMENT: Circling changed



AD ELEV 503 ft

CERKLE TOWER 118.555
 CERKLE TOWER 127.230
 CERKLE APPROACH 118.555
 CERKLE APPROACH 127.230

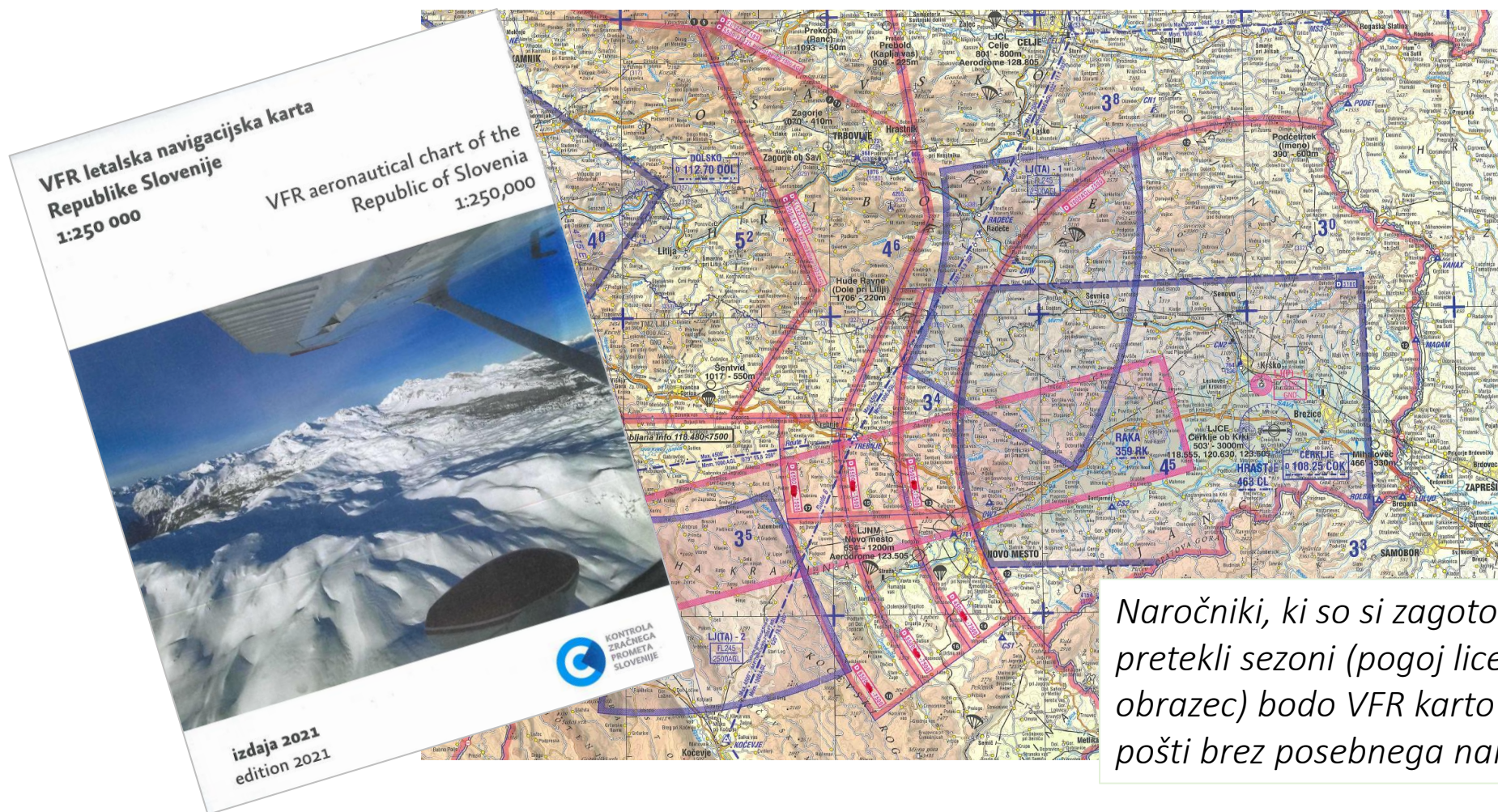
Cerklje ob Krki / CERKLJE

AIP SLOVENIA

LJCE AD 2.24.13 - 3
 20 MAY 2021

AIRAC AMDT 109/2021

VFR LETALSKA NAVIGACIJSKA KARTA 2021



Naročniki, ki so si zagotovili brezplačni izvod v pretekli sezoni (pogoj licenca ter izpolnjen GDPR obrazec) bodo VFR karto za leto 2021 dobili po pošti brez posebnega naročanja.

Odgovori na možna splošna vprašanja :

Kakšen je status LJCE ko TWR/APP Cerklje NI AKTIVEN ?

Kdo lahko tam pristane ? Na njem lahko pristanejo in vzletijo le tisti, ki imajo sklenjen sporazum z obratovalcem letališča - MORS.

So dovoljeni šolski krogi in T/G ? Za zrakoplove predstavnikov, ki imajo sklenjen sporazum z MORS DA, ostali NE.

Je dovoljen nizek prelet steze? Za zrakoplove predstavnikov, ki imajo sklenjen sporazum z MORS DA, ostali NE.

Kakšen je status LJCE ko je TWR/APP Cerklje AKTIVEN ?

Kdo lahko tam pristane ? Vsi, ki imajo izpolnjen FPL in so skladno z zapisom v AIP pridobili dovoljenje obratovalca letališča (PPR).

So dovoljeni šolski krogi in T/G ? DA, pod pogojem da prometna situacija to dopušča.

So dovoljeni IFR Trenažni leti ? DA, pod pogojem da prometna situacija to dopušča.

Možna dodatna vprašanja posredujte na naslov : info@sloveniacontrol.si

Hvala za pozornost